



## Antique, Fine Art & Interiors Sale, 24th Sep, 2025 - 25th Sep, 2025

- |  |   |
|--|---|
| <p>1 A set of ten late 19th/early 20th century wine goblets, the tapered cylindrical bowls with faceted details, raised on circular conical feet, 14.5cm high.<br/><b>£300-500</b></p> <p>2 An antique wine glass, with air twist stem on circular conical foot, 16.4cm high.<br/><b>£30-70</b></p> <p>3 Two antique opaque twist wine glasses, one with fluted tapered cylindrical bowl engraved with a band of fruiting vine, 15cm high, the other with plain bowl, 14.8cm high.<br/><b>£50-100</b></p> <p>4 Two antique opaque twist wine glasses, the taller example with a tapered fluted bowl, 18cm high; the smaller with ogee bowl, 14.5cm high.<br/><b>£50-100</b></p> <p>5 A group of four assorted antique wine glasses, comprising one with multiple opaque twist stem, 15.5cm high; and three with air twist stems, 18.5cm, 16.5cm and 14.2cm.<br/><b>£50-100</b></p> <p>6 A late 19th/early 20th century wine glass of Masonic interest, the tapered cylindrical bowl with faceted detail engraved with compass, set square and initials 'J.S.' within a foliate border, 12cm high.<br/><b>£30-70</b></p> <p>7 A set of five early 20th century clear glass wine glasses, the tapered cylindrical bowls decorated with a band of fruiting vine on a faceted stem and circular foot, 13.5cm high; together with a miniature knopped stem wine glass, 7cm high.<br/><b>£40-80</b></p> <p>8 A collection of six assorted 19th century clear glass rummers, the tallest 17.5cm high.<br/><b>£50-100</b></p> <p>9 Five assorted late 19th century rummers, comprising three matching all with fruiting vine borders and two other similar, 15cm high.<br/><b>£50-100</b></p> <p>10 A 20th century glass plate of fishing interest, the underside with wheel cut decoration of salmon, fly and line within a foliate engraved border, 24cm diameter.<br/><b>£30-70</b></p> <p>11 A collection of four Antique toasting glasses, three etched with Masonic emblems, one plain, the tallest 10cm high.<br/><b>£40-80</b></p> | <p>12 A set of four late 19th/early 20th century wine glasses, each etched with initials, possibly 'H.E.C.', the details picked out in gilt within gilt lined borders, 15.5cm high.<br/><b>£40-80</b></p> <p>13 A large 19th century glass goblet, the tapered cylindrical bowl with facet cut detail, engraved with rectangular panel enclosing initials and a rectangular panel enclosing horse riders, huntsmen and hounds pursuing a fox, 21cm high.<br/><b>£70-150</b></p> <p>14 A 19th century clear glass wine goblet, the bowl engraved with verse inscribed 'A jug of wine, a loaf of bread and thou beside me singing in the wilderness', within a border of thistles, roses and foliage, on waisted faceted stem and circular foot, 16cm high; together with a large beaker vase with wheel cut decoration of three vignettes, to include one enclosing a bird, two enclosing pavilions, on a ground of fruiting vine, 15cm high.<br/><b>£40-80</b></p> <p>15 A set of four 19th century clear glass rummers, the tapered cylindrical bowls with facet cut decoration and angular wheel cut feather pattern, 15cm high; together with a similar larger rummer, 19cm high.<br/><b>£50-100</b></p> <p>16 A collection of twelve assorted 19th century clear glass rummers, approximately 15.5cm high.<br/><b>£100-200</b></p> <p>17 A set of six 19th century oversized glass rummers, 14.5cm high.<br/><b>£100-200</b></p> <p>18 A set of six late 19th century rummers, the tapered and faceted cylindrical bowls engraved with a border of hops, 15cm high.<br/><b>£50-100</b></p> <p>19 A pair of late 19th/early 20th century opaque white/grey glass E.P. mounted salt pails, both with swing handles and coloured enamel decoration of flowers and foliage, 5cm diameter x 4cm high.<br/><b>£20-50</b></p> <p>20 A late 19th/early 20th century small ruby flashed clear glass decanter and stopper, 18cm high.<br/><b>£20-50</b></p> |
|--|---|



## Antique, Fine Art & Interiors Sale, 24th Sep, 2025 - 25th Sep, 2025

- |    |  |    |   |
|----|--|----|---|
| 21 | A small Royal Worcester hand-painted side plate, decorated by H.H. Price, painted with fruit on a mossy background, puce printed marks, signed lower left, 16cm diameter.<br><b>£40-80</b>   | 31 | A Dresden porcelain figure of an officer of the Grenadier Company Coldstream Guard 1760, 27cm high.<br><b>£20-50</b>  |
| 22 | Anemone, a Moorcroft salt glazed pottery vase, blue painted signature and impressed marks, 16cm high.<br><b>£50-100</b>  | 32 | A small Royal Worcester twin-handled, reticulated and jewelled vase by George Owen and Harry Chair, with jewelled border at the rim above a reticulated band with richly gilded and colourful floral painted garlands, green printed marks, number '1959', red painted mark HH, 12cm high.<br><b>£800-1,200</b> |
| 23 | A Wemyss pottery candlestick decorated with thistles, impressed and green painted mark, 18cm high.<br><b>£30-70</b>  | 33 | A pair of Chinese porcelain famille rose tea bowls and saucers, Qing dynasty, possibly Yongzheng, decorated with cockerel and fan shaped motifs, one saucer bearing paper label for 'E.Blourdier, 13 Rue d'Artois, Paris', saucers 11cm diameter, tea bowls 6.5cm diameter x 4cm high.<br><b>£200-400</b>       |
| 24 | Charles Vyse (1882-1971) A Chelsea pottery figure 'The shawl, primrose and violets', blue painted marks, CV monogram, 1926 Chelsea, 26.5cm high.<br><b>£300-500</b>  | 34 | A Japanese bronze figure of a Shishi, early 20th century, signed.<br><b>£400-600</b>  |
| 25 | An 18th century Worcester porcelain teapot and cover, painted with scattered foliate sprays, 16.5cm high.<br><b>£50-100</b>  | 35 | Daum, a Pate de Verre glass dish in orange, blue and purple glass modelled with a fish, wheel cut marks 'Daum, France', 11cm high.<br><b>£50-100</b>  |
| 26 | A Royal Worcester figure, 'Jack HN2060', 14cm high.<br><b>£20-50</b>   | 36 | A Japanese Komi circular shaped dish, early 20th century, decorated with pavilions and fishing boats in a river landscape before Mount Fuji, within a border of stylised leaves raised on three pierced bracket feet, signed, 18cm diameter.<br><b>£300-500</b>   |
| 27 | A Coalport cobalt blue ground porcelain vase, decorated with oval printed and hand-coloured panel of colourful flowers within a richly gilded border, printed and painted marks 'V7586/246', 11cm high.<br><b>£30-70</b>   | 37 | A pair of Chinese gilt metal and cloisonné enamel cranes, modelled standing on rectangular plinths with multicoloured plumage, the backs with detachable wing sections, approximately 25cm high.<br><b>£400-600</b>   |
| 28 | A small Herend porcelain urn shaped vase, painted with border of blue and green flowers, 7.5cm high; together with a late 19th/early 20th century Continental porcelain twin-handled cup and cover, decorated in puce with scattered foliate sprays, 6.5cm high.<br><b>£20-50</b>                                      | 38 | A Clarice Cliff Bizarre Gayday pattern bowl, 17.5cm diameter x 7.5cm high.<br><b>£40-80</b>   |
| 29 | A 19th century English porcelain garniture, probably Spode, decorated in the Imari palette with panels of flowers and foliage on a cobalt blue ground within richly gilded and jewelled border, painted pattern number 1216, the tall vase 16cm high, the pair of smaller companion vases 11cm high.<br><b>£50-100</b> | 39 | A yellow metal pendant and chain, tests as 9ct gold, the pendant formed as a spider's web, set with a turquoise and split pearl detailed spider, gross weight 6 grams.<br><b>£200-400</b>   |
| 30 | A Carltonware Pick Flowers Brewmaster advertising pub figure, printed marks, 23.5cm high.<br><b>£20-50</b>   | 40 | A Middle Eastern high carat yellow metal necklace, tests as 22ct gold, gross weight 10 grams.<br><b>£600-800</b>  |



## Antique, Fine Art & Interiors Sale, 24th Sep, 2025 - 25th Sep, 2025

- |    |   |    |  |
|----|---|----|--|
| 41 | A 9ct gold necklace, suspending an 18ct gold and gem set pendant, the necklace 1.9 grams, the pendant gross weight 2.3 grams.<br><b>£120-180</b>  | 55 | An 18ct gold ring, set with a single old cut diamond in raised claw setting, tapering band with reeded shoulders, stamped '18ct', size T, gross weight 6.2 grams.<br><b>£250-350</b>   |
| 42 | A long single strand 9ct gold mounted pearl necklace, 95cm long.<br><b>£250-500</b>   | 56 | A 9ct gold gents ring, square shaped, set with a single princess cut diamond and four small diamonds to the corners, the tapering band with textured shoulders, Birmingham hallmarks, size S ½, gross weight 5.5 grams.<br><b>£150-200</b> |
| 43 | A 9ct gold mounted smokey quartz pendant suspended on a yellow metal mounted leather necklace, gross weight 12.6 grams.<br><b>£120-180</b>  | 57 | An 18ct gold and diamond cluster ring, set with a central old cut diamond within a border of seven further old cut diamonds, in raised claw setting, Birmingham hallmarks, size O, gross weight 10.9 grams.<br><b>£400-600</b>             |
| 44 | A 9ct gold necklace suspending 9ct gold mounted gem set pendant, gross weight 7.9 grams.<br><b>£100-200</b>   | 58 | An 18ct gold sapphire and diamond five stone ring, size N, gross weight 3.2 grams.<br><b>£120-180</b>  |
| 45 | An unmarked yellow metal necklace, 7.1 grams.<br><b>£100-200</b>  | 59 | A 9ct gold ring, with a gypsy set single diamond, and plain tapering band, London hallmarks, size V ½, gross weight 3.7 grams.<br><b>£80-120</b>   |
| 46 | A yellow metal necklace, tests as 9ct gold, 4.5 grams.<br><b>£100-200</b>   | 60 | An 9ct gold gents dress ring, set with three vari-coloured princess cut diamonds in box settings, with square shaped band, Birmingham hallmarks, size T, gross weight 9.1 grams.<br><b>£200-300</b>  |
| 47 | A 9ct gold necklace, 2.5 grams.<br><b>£50-100</b>   | 61 | A 14k white gold ring, set with three diamonds in box settings, the band with leaf chased shoulders, stamped '14k', size O, gross weight 5.6 grams.<br><b>£150-250</b>   |
| 48 | A 9ct gold necklace, 21.9 grams.<br><b>£500-700</b>   | 62 | A 9ct gold gents large dress ring, formed as a stylised flowerhead, set with six various pear shaped coloured gem stones, with plain tapering band, 9ct gold hallmarks, size T, gross weight 12.6 grams.<br><b>£200-300</b>                |
| 49 | A yellow metal gem set pendant and chain, the chain stamped '10k', gross weight 6.9 grams.<br><b>£120-180</b>   | 63 | A gents 9ct gold dress ring, with three gypsy set diamonds in star shaped settings and plain tapering band, Sheffield hallmarks, size U, gross weight 6.1 grams.<br><b>£150-250</b>  |
| 50 | A long yellow metal necklace, tests as 9ct gold, 13 grams.<br><b>£250-400</b>   | 64 | A 14k white gold gents large dress ring, with pierced openwork mount, randomly set with three diamonds and three zircons, stamped '14k', size T, gross weight 11.1 grams.<br><b>£300-500</b>   |
| 51 | A 9ct gold necklace, 2.4 grams; together with three assorted 9ct gold and yellow metal gem set pendants and chains, gross weight 7 grams.<br><b>£150-300</b>  |    |  |
| 52 | A 9ct white gold pearl and diamond chip pendant necklace; together with a pair of matching earrings, the earrings stamped '18k', gross weight 7 grams.<br><b>£120-180</b>                               |    |  |
| 53 | A modern 9ct gold Art Deco style large dress ring, with pave set rubies, sapphires, diamonds and emeralds, in geometric mount, Birmingham hallmarks, size U, gross weight 8.9 grams.<br><b>£200-300</b> |    |  |
| 54 | A 9ct gold ring, set with an oval cut brown diamond in raised setting, and two small diamonds to the shoulders, Birmingham hallmarks, size T, gross weight 5.9 grams.<br><b>£150-200</b>                |    |  |



## Antique, Fine Art & Interiors Sale, 24th Sep, 2025 - 25th Sep, 2025

- |    |  |    |   |
|----|--|----|---|
| 65 | A 9ct gold opal and garnet cluster ring (one garnet missing), size O, gross weight 2.7 grams.<br><b>£50-100</b>  | 77 | A gents gold dress ring, set with a large old cut single diamond, in raised claw setting, and unmarked gold tapering band, size V, gross weight 7.5 grams.<br><b>£300-500</b>                                 |
| 66 | An 9ct gold gents dress ring, with one oval and two circular gypsy set diamonds, and plain tapering band, Birmingham hallmarks, size T ½, gross weight 10.9 grams.<br><b>£200-300</b>              | 78 | An 18ct gold ring, set with a single diamond in raised claw setting, with tapering channels to the shoulders, London hallmarks, size S ½, gross weight 6.6 grams.<br><b>£250-350</b>                          |
| 67 | An 18ct gold gents dress ring, set with a circular brown diamond in geometric mount, Sheffield hallmarks, size U, gross weight 6.2 grams.<br><b>£200-300</b>                                       | 79 | A white metal and diamond five stone ring, the shank stamped '18ct' and 'PT', size N 1/2, gross weight 2.8 grams.<br><b>£120-180</b>  |
| 68 | An 18ct gold sapphire and diamond seven stone ring, hallmarks rubbed, tests as 18ct, size T, gross weight 2.7 grams.<br><b>£120-180</b>  | 80 | A white and yellow metal sapphire and diamond three stone ring, stamped '18ct', size J, gross weight 3.1 grams.<br><b>£120-180</b>  |
| 69 | A gents gold dress ring, set with a cluster of seven diamonds, in unmarked gold tapering mount, size Q, gross weight 10.7 grams.<br><b>£200-300</b>  | 81 | Two yellow metal dress rings, one set with oval cameo, size Q 1/2, tests as 9ct gold, gross weight 3.1 grams; the other set with a single pearl, tests as 18ct gold, gross weight 3 grams.<br><b>£150-300</b> |
| 70 | A 9ct gold gents dress ring, with a gypsy set single diamond, and two small cinnamon coloured gemstones to the shoulders, Birmingham hallmarks, size S, gross weight 7.0 grams.<br><b>£150-200</b> | 82 | A yellow metal opal and synthetic diamond cluster ring, stamped '14kt', size N, gross weight 4.2 grams.<br><b>£70-150</b>   |
| 71 | A 14ct gold gents ring, with three old cut gypsy set diamonds, and plain tapering band, stamped '14' size U, gross weight 7.0 grams.<br><b>£250-350</b>  | 83 | A 9ct gold amethyst and diamond cluster ring, size M, gross weight 3 grams.<br><b>£70-150</b>   |
| 72 | A 9ct gold emerald and diamond cluster ring, size L 1/2, gross weight 2 grams.<br><b>£70-150</b>   | 84 | Two 9ct gold rings, size L and size I, gross weight 3.5 grams.<br><b>£70-150</b>  |
| 73 | A white and yellow metal three stone diamond ring, stamped 18ct, plat, size N, 3.6 grams.<br><b>£200-400</b>   | 85 | A yellow metal ruby and diamond nine stone ring, stamped '750', size O, gross weight 3.3 grams.<br><b>£70-150</b>   |
| 74 | A white and yellow metal diamond and garnet cluster ring, the shank stamped 18ct, size O, 3.4 grams.<br><b>£150-300</b>  | 86 | A 9ct gold and diamond five stone ring, size Q, gross weight 3.1 grams.<br><b>£100-200</b>  |
| 75 | An 18ct gold ring, with a gypsy set single diamond, with plain tapering band, stamped '18ct', size T ½, gross weight 6.0 grams.<br><b>£250-350</b>   | 87 | Three assorted 18ct gold gem set rings, 6.8 grams.<br><b>£120-180</b>   |
| 76 | An 18ct gold ring, set with a single diamond in raised claw setting, tapering band with reeded shoulders, London hallmarks, size S, gross weight 8.8 grams.<br><b>£300-500</b>                     | 88 | Two yellow metal gem set dress rings, tests as 9ct gold, gross weight 8.2 grams.<br><b>£100-200</b>   |



## Antique, Fine Art & Interiors Sale, 24th Sep, 2025 - 25th Sep, 2025

- |  |  |
|--|--|
| <p>88A A 9ct gold single stone amethyst coloured gem set ring, size O, gross weight 2.1 grams; together with a 9ct gold and multicoloured gem set ring centred with oval faceted pear shaped gemstone, size O, gross weight 3.8 grams.<br/><b>£100-200</b></p> <p>88B A collection of five assorted yellow metal gem set dress rings, gross weight 15.1 grams.<br/><b>£200-400</b></p> <p>88C A collection of four assorted 9ct and yellow metal single stone gem set dress rings, gross weight 14.7 grams.<br/><b>£150-300</b></p> <p>88D An 18ct gold and diamond three stone ring, size L, gross weight 3.7 grams.<br/><b>£150-300</b></p> <p>88E Three assorted yellow and white metal gem set dress rings, gross weight 4.9 grams.<br/><b>£70-150</b></p> <p>88F Three assorted 9ct gold and yellow metal gem set dress rings, gross weight 15.9 grams.<br/><b>£200-400</b></p> <p>89 Three 9ct gold rings, to include two yellow 9ct gold gem set dress rings and a white metal 9ct gold gem set dress ring, gross weight 16.6 grams.<br/><b>£150-300</b></p> <p>90 Two 18ct gold coloured gem stone and diamond chip set dress rings, gross weight 6.8 grams.<br/><b>£200-300</b></p> <p>91 Two 9ct gold and gem set cluster rings, gross weight 6.1 grams.<br/><b>£120-180</b></p> <p>92 An 18ct gold ring, set with a single rose cut diamond in raised claw setting, tapering band with reeded shoulders, stamped with Sheffield hallmarks, '18' with a crown, size L ½, gross weight 3.3 grams.<br/><b>£150-200</b></p> <p>93 An Antique mourning ring, with glazed locket compartment and chased foliate shoulders, unmarked, size O.<br/><b>£40-80</b></p> <p>94 A 9ct gold dress ring, set with six small diamonds in rectangular shaped setting, plain tapering band, Birmingham hallmarks, size W, gross weight 3.8 grams.<br/><b>£80-120</b></p> <p>95 Two 9ct gold single stone coloured gem set dress rings, gross weight 5.5 grams.<br/><b>£70-150</b></p> | <p>96 Two 9ct gold gem set dress rings, one set with a single pearl, loose but present, gross weight 7.6 grams.<br/><b>£120-180</b></p> <p>97 A Victorian diamond and cat's eye chrysoberyl cluster ring, set with a central old cut diamond, four cabochon chrysoberyls and rose cut diamonds, in unmarked white and yellow gold mount, size Q, gross weight 4.8 grams.<br/><b>£200-300</b></p> <p>98 A Victorian moonstone five stone ring, in raised pierced mount set with cabochon moonstones and small rose cut diamonds, in unmarked gold mount, size T, gross weight 2.3 grams.<br/><b>£100-150</b></p> <p>99 A yellow metal ring stamped '916', suspending a 1906 yellow metal coin stamped '916', tests as 22ct gold, 2.1 grams.<br/><b>£100-200</b></p> <p>100 Lewis Grant, an 18ct white gold diamond concave princess cut diamond ring, set with three rows of ten princess cut diamonds, size J, gross weight 10 grams, together with original box, papers and receipt of purchase dated 2009.<br/><b>£800-1,200</b></p> <p>101 An early 19th century mourning ring, with glazed hair locket compartment within a border of pearls, unmarked gold mount with pierced shoulders, size O, gross weight 4.1 grams.<br/><b>£100-150</b></p> <p>102 A Victorian amethyst three stone ring, with small rose cut diamonds, in 18ct gold mount with carved shoulders, London hallmarks, size T/ T ½ gross weight 4.7 grams.<br/><b>£150-200</b></p> <p>102A Two rings to include an early 20th century garnet, split pearl and turquoise cluster ring, size M, gross weight 1.9 grams; together with a yellow metal split pearl Navette ring, stamped '18ct', size N, gross weight 3.2 grams.<br/><b>£120-180</b></p> <p>103 A 1974 South African gold Krugerrand.<br/><b>£1,800-2,200</b></p> <p>104 A George V gold sovereign dated 1912.<br/><b>£400-600</b></p> <p>105 A box of assorted gentlemen's and ladies wristwatches, to include examples by Sekonda, Espirit, C. Bernard, DKNY, Storm, Klein, Rotary and Lotus.<br/><b>£40-80</b></p> |
|--|--|



## Antique, Fine Art & Interiors Sale, 24th Sep, 2025 - 25th Sep, 2025

- 106 A collection of costume jewellery to include three boxed Waterford Crystal necklaces; three boxes of Butler and Wilson costume jewellery; two boxed pairs of Swarovski earrings; a perspex Babycham brooch; a yellow metal Coca-Cola bottle brooch; and remaining items.  
**£50-100**
- 107 A box of assorted costume jewellery necklaces.  
**£50-100**
- 108 A box of assorted costume jewellery; rings; pendants and necklaces; together with assorted silver and white metal bangles.  
**£50-100**
- 109 A silver and green enamel pendant necklace in Ortak box; together with a Birmingham silver oval pendant and chain.  
**£40-80**
- 110 A late 19th/early 20th century yellow metal gem set oval locket, tests as 9ct gold, gross weight 6.7 grams; together with a white metal heart shaped pendant locket and chain; a sterling silver Heathergems pendant and chain; and another silver necklace suspending oval mother-of-pearl pendant.  
**£120-180**
- 111 A box of assorted costume jewellery, to include House of Harlow yellow metal triple strand layered necklace; a Buckingham hinged bangle; assorted earrings; brooches, etc.  
**£50-100**
- 112 A box of assorted gentlemen and ladies wristwatches, to include gentlemen AV1-8 stainless steel automatic wristwatch; a Kahuna 10ATM wristwatch; a Blossom yellow metal and purple gem set ladies bracelet watch in original box; and other remaining wristwatches to include makers Silvermoon, Cosmopolitan, Rainbow, Gianni Ricci, Jane Shilton, and Krug-Bauman.  
**£50-100**
- 113 A collection of assorted boxed ladies wristwatches to include D&G Time, Guess, Pulsar, silver pouch containing two D&G watches, and three boxed Ingersoll watches.  
**£50-100**
- 113A A Royal Mint Elizabeth II 2018 limited edition '60 Years of Paddington Bear' 50p gold coin in presentation box.  
**£400-700**
- 113B A 19th century American Indian beadwork bag/pouch, decorated on both sides with coloured beads to depict flowers and foliage, 16cm x 13cm.  
**£50-100**
- 113C A collection of assorted mainly white metal costume jewellery, to include various bangles, earrings, rings, pendants, brooches, cameo set bracelet, ladies Kingston 17-jewel wristwatch lacking strap, brooch in the form of a Stetson hat, etc.  
**£40-80**
- 113D A box of assorted costume jewellery, beads, necklaces, various designs, various stones; together with a small white metal mounted porcelain square shaped trinket box.  
**£50-100**
- 114 A Sheffield silver three piece bachelors tea set, oval shaped with part gadrooned decoration, gross weight 17.8 troy ozs.  
**£300-500**
- 115 A Victorian silver melon shaped teapot, London 1857, maker's mark of W.S., engraved with presentation inscription dated 1857, raised on four scroll feet, the cover with fruit and foliate finial, gross weight 24 troy ozs.  
**£400-600**
- 116 A late Victorian silver mounted dressing table mirror, Birmingham 1903, with embossed decoration, 48.5cm x 33cm.  
**£150-250**
- 117 A Birmingham silver bud vase with frilled rim, loaded, 28.5cm high.  
**£50-100**
- 118 A Victorian silver mounted cut glass claret jug, London 1892, maker's mark of J.A. over T.S. for John Aldwinckle and Thomas Slater, 26.5cm high.  
**£100-200**
- 119 A pierced oval boat shaped fruit dish, by Davidson, Henderson & Sorley of Glasgow, hallmarked Sheffield 1931, on four scroll feet, 22cm wide x 12cm high, 13.7 troy ozs.  
**£150-200**
- 120 A London silver hot water pot with presentation inscription dated 1906-1931, 20.5cm high, gross weight 29 troy ozs.  
**£500-700**
- 121 A London silver salver, with scalloped edge, raised on three shaped feet, 25.5cm diameter, 17.8 troy ozs.  
**£300-500**



## Antique, Fine Art & Interiors Sale, 24th Sep, 2025 - 25th Sep, 2025

- |   |  |
|---|--|
| <p>122 A Sheffield silver salver, with shell and scalloped edge, on three claw and ball feet, 27cm diameter, 17.6 troy ozs.<br/><b>£300-500</b></p> <p>123 A George III silver salver, London 1787, maker's mark of H.C. for Henry Chawner, engraved with armorial crest of a lion and motto inscribed 'Sur Esperance', with reeded edge, raised on three shaped supports, 20.5 cm diameter, 10.9 troy ozs.<br/><b>£200-400</b></p> <p>124 A Scottish silver small circular salver, by J. McKay, Edinburgh 1821, with richly chased foliate decoration, on four paw feet, 17.5cm diameter, 9.8 troy ozs.<br/><b>£100-150</b></p> <p>125 A French silver pierced oval large bon bon dish, Sheffield import hallmarks for 1896, with rams mask handles, 19cm wide, 6.3 troy ozs.<br/><b>£100-150</b></p> <p>125A A Birmingham silver sugar caster, 17cm high, 4.6 troy ozs.<br/><b>£70-150</b></p> <p>126 A group of silver flatware comprising, a Victorian silver butter knife by George Adams; a large sauce ladle by J. &amp; W. Mitchell of Glasgow; a fiddle pattern toddy ladle by George Fenwick of Edinburgh; an Irish fiddle pattern teaspoon; and a salt spoon and a mustard spoon, gross weight 6.9 troy ozs (6).<br/><b>£50-100</b></p> <p>127 Paul Storr, A pair of George III silver salt spoons, by Paul Storr, London 1811, of fiddle and thread pattern, with gilt bowls, 10.5cm long, gross weight 1.2 troy ozs (2).<br/><b>£50-100</b></p> <p>128 Three Irish provincial silver bright cut sugar teaspoons, by John Warner, Cork, c. 1790, gross weight 1.3 troy ozs (3).<br/><b>£40-60</b></p> <p>129 An Irish provincial silver pair of bright cut sugar tongs, by Jonathan &amp; Samuel Nicholson, Cork, c. 1790, 14.5cm long.<br/><b>£40-60</b></p> <p>130 A London silver sugar caster embossed with scroll detail, 17.5cm high, 4.5 troy ozs; together with a Sheffield silver mounted clear glass sugar caster with cut decoration of flowers and foliage, 17.5cm high.<br/><b>£50-100</b></p> | <p>131 A vintage oversized pewter hip flask, makers mark of J.D. &amp; S., retailers mark for Abercrombie &amp; Fitch Co. New York, 23cm high x 14cm wide.<br/><b>£50-100</b></p> <p>132 A small Sheffield silver twin-handled oval bowl, raised on four hoof feet, 14.5cm wide x 6.5cm high, 2.8 troy ozs.<br/><b>£40-80</b></p> <p>133 A London silver mounted rectangular cigarette box, 10cm wide.<br/><b>£40-80</b></p> <p>134 Three assorted silver cruets and two spoons, silver element 4.3 troy ozs.<br/><b>£40-100</b></p> <p>135 A set of three George IV silver sauce ladles, Glasgow 1829, makers mark D.McD, fiddle pattern, each engraved with the initial 'H', 3.5 troy ozs.<br/><b>£50-100</b></p> <p>136 A Continental white metal tea strainer, stamped mark '800', 15.5cm long x 10cm wide, 1.8 troy ozs.<br/><b>£20-50</b></p> <p>137 A Chester silver quatrefoil shaped dressing table box with hinged cover, 8cm wide, 1.5 troy ozs.<br/><b>£20-50</b></p> <p>138 A Birmingham silver vesta holder; together with a silver plated vesta holder in the form of a book; and two Middle Eastern white metal amulet cases/pendants.<br/><b>£30-70</b></p> <p>139 A group of silver to include a Sterling silver christening mug; Birmingham silver oval shaped snuff box with hinged cover; and a pair of Birmingham silver sugar tongs in the form of a wishbone, gross weight 6.3 troy ozs.<br/><b>£100-200</b></p> <p>140 An Indian silver three-handled cup and cover, the sides with engraved decoration of tiger, camel and antelope, the three handles formed as cobra snakes, the detachable cover with pointed finial, 10cm high, 6.4 troy ozs.<br/><b>£100-200</b></p> <p>141 An Indian silver bowl, with frilled rim and embossed decoration of animals and palm trees, 11.5cm diameter x 5cm high, 3.2 troy ozs.<br/><b>£50-100</b></p> <p>142 A Scottish silver basting spoon, by R. Stewart, Glasgow 1861, fiddle pattern, 31.5cm long, 4 troy ozs.<br/><b>£40-60</b></p> |
|---|--|



## Antique, Fine Art & Interiors Sale, 24th Sep, 2025 - 25th Sep, 2025

- |  |  |
|--|--|
| <p>143 A pair of Irish silver large table spoons, by James Keating, Dublin 1800, of pointed end pattern, engraved with bright cut decoration, star motifs and greyhound crests, gross weight 3.9 troy ozs (2).<br/><b>£100-150</b></p> <p>144 Two Irish silver table spoons, engraved with bright cut decoration, one by John Power, the other by John Shields, Dublin, c. 1800, gross weight 3.6 troy ozs (2).<br/><b>£40-60</b></p> <p>145 An Irish silver large soup ladle, by Samuel Neville, Dublin 1811, fiddle pattern, engraved with a salmon crest, 7.6 troy ozs.<br/><b>£100-150</b></p> <p>146 A Victorian silver mounted boot hook, the handle in the form of a Terrier dog's head, London, 1888, makers mark slightly obscured, possibly CB, 30cm long.<br/><b>£70-150</b></p> <p>147 An Irish provincial silver claret label, by William Teulon, Cork, c. 1795, two marks to include 'WT' with star above and 'STERLING' (both incuse), 34.8mm wide.<br/><b>£50-100</b></p> <p>148 An Irish silver large claret label, by John Stoyte, Dublin, c. 1790, of pierced navette shape, with ribbon bow surmount, 64.5mm wide.<br/><b>£50-100</b></p> <p>149 A Scottish silver Hanoverian pattern tablespoon, by James Glen, Glasgow, c. 1760, 2.1 troy ozs.<br/><b>£40-60</b></p> <p>150 A Scottish silver marrow scoop, by Robert Gray, Glasgow, c. 1780, 22cm long, 1.5 troy ozs.<br/><b>£60-100</b></p> <p>151 A Victorian silver double ended medicine spoon, by George Adams, London, 1872, 13.5cm long.<br/><b>£60-100</b></p> <p>152 A Victorian novelty silver letter opener, by S. Mordan &amp; Co., London 1894, formed as a miniature Officer's sword and scabbard, 14.5cm long.<br/><b>£100-200</b></p> <p>153 A George III Irish silver wine coaster, by Christopher Haines, Dublin 1790, of plain circular form with inset wood base, 12.5cm diameter x 4.5cm high.<br/><b>£50-80</b></p> | <p>154 A pair of Art Deco silver and lilac enamel small dressing table candlesticks, by H. Matthews, Birmingham 1921, on tapering square bases, 7.5cm high x 7cm square.<br/><b>£100-150</b></p> <p>155 Three assorted silver mounted photograph frames, the largest of rectangular form with heart shaped aperture.<br/><b>£40-80</b></p> <p>156 A silver hip flask, London 1907, with engraved inscription, 12cm, 3.2 troy ozs.<br/><b>£50-80</b></p> <p>157 A French silver two-handled cream pail; a silver sugar basin with shaped rim; and a silver pear shaped cream jug, Birmingham, 1908, gross weight 5.5 troy ozs (3).<br/><b>£80-120</b></p> <p>158 A Sheffield silver hip flask, 11.5cm high; together with a London silver wine funnel, 12cm high, gross weight 5.4 troy ozs.<br/><b>£70-150</b></p> <p>159 A South American embossed white metal mate tea bowl with attached straw, 32cm, 7.1 troy ozs.<br/><b>£50-80</b></p> <p>160 A collection of assorted silver flatware and silver handled cutlery.<br/><b>£20-50</b></p> <p>161 A collection of assorted silverware to include a Sheffield silver fork and spoon in a fitted case; Birmingham silver propelling pencil; Birmingham silver cigar punch; Birmingham silver teaspoon with D shaped handle; a pair of silver sugar tongs; a rectangular silver vesta holder; a pair of Birmingham silver twin-handled salts with Bristol blue glass liners; a silver handled meat skewer; and a pair of Sheffield silver knife rests.<br/><b>£70-150</b></p> <p>161A A late 20th century eight place setting silver canteen of flatware and cutlery, Sheffield 1992, makers mark of R&amp;B for Roberts &amp; Belk, comprising eight silver table forks; eight silver soup spoons; eight silver dessert spoons; eight silver starter forks; eight silver teaspoons; two silver serving spoons; eight silver handled table knives; and eight silver handled starter knives; together with a silver handled cheese knife and a pair of similar silver salad servers, kings pattern, all in a fitted case; silver element 105.6 troy ozs.<br/><b>£2,000-3,000</b></p> |
|--|--|





## Antique, Fine Art & Interiors Sale, 24th Sep, 2025 - 25th Sep, 2025

- |   |   |
|---|---|
| <p>162 A silver table service for eight place settings, by Roberts &amp; Belk, Sheffield, 1992, comprising eight table forks; eight soup spoons; eight dessert forks; eight dessert spoons; eight teaspoons; eight silver handled table knives; and eight silver handled dessert knives, 80.7 troy ozs.<br/><b>£1,000-1,500</b></p> <p>163 A collection of assorted silver to include a circular shaped dish; a circular ash tray; a small cream jug; a small sugar bowl; and a brandy warming can with turned wooden handle; gross weight 15.2 troy ozs.<br/><b>£250-400</b></p> <p>164 A collection of assorted silver and white metal wares to include a pair of silver lion shaped tureen finials; assorted napkin rings; cruets; sauce boat; etc; gross weight 35.7 troy ozs.<br/><b>£300-500</b></p> <p>165 A cased set of five Sheffield silver grape fruit spoons, 3.8 troy ozs; together with a cased set of twelve Glasgow silver teaspoons and tongs, 6.3 troy ozs.<br/><b>£120-180</b></p> <p>166 A Birmingham silver seven piece cruet set in fitted box for Mappin &amp; Webb, silver element 9.1 troy ozs.<br/><b>£150-250</b></p> <p>167 A cased set of six Birmingham silver coffee spoons; together with two Birmingham silver three piece cruet sets, both in fitted cases.<br/><b>£100-200</b></p> <p>168 Three cased sets of silver to include a pair of shell shaped dishes with blue glass liners and mother-of-pearl pickle forks; a cased set of three cruets; and a cased nail file set.<br/><b>£100-200</b></p> <p>169 A cased set of eleven Glasgow silver teaspoons and tongs; together with a cased set of eleven Sheffield silver Art Deco coffee spoons and tongs; gross weight 16 troy ozs.<br/><b>£250-400</b></p> <p>170 A collection of assorted silver flatware, 39.1 troy ozs.<br/><b>£700-900</b></p> <p>171 A Sterling silver three piece dressing table set comprising handheld mirror and two brushes, with embossed Art Nouveau foliate design.<br/><b>£70-150</b></p> | <p>172 A collection of four assorted silver goblets to include one unboxed example with Birmingham hallmarks, engraved with shield and date 'AD71-1971'; a Queens Silver Jubilee 1952-1977 goblet in fitted box, hallmarked Sheffield; a Royal Silver Wedding goblet, hallmarked Birmingham, in fitted box; and a silver goblet commemorating the marriage of the Prince of Wales, Birmingham silver hallmarks, in fitted case; gross weight 21.3 troy ozs.<br/><b>£200-400</b></p> <p>173 A London silver rectangular desk stand, with pierced three-quarter gallery, centred with detachable clear cut glass ink well with silver stopper, bearing presentation inscription 'To The Rev. Robert Rattray Mangin', 16cm wide, silver element 6.9 troy ozs.<br/><b>£100-200</b></p> <p>174 A George III Irish silver sugar bowl, by Matthew West, Dublin 1784, with punch beaded swag decoration, on three hoof feet, 13.5cm diameter x 7.5cm high, 5.8 troy ozs.<br/><b>£100-200</b></p> <p>175 A London silver sugar castor, 18.5cm high, 6.2 troy ozs.<br/><b>£70-150</b></p> <p>176 A George III silver tankard, London 1768, makers mark of I.K, possibly that of John King, of plain form, engraved with Armorial crest, inscribed on banner 'Sustinente Veritate', 12.5cm high, 10.9 troy ozs.<br/><b>£200-300</b></p> <p>177 A pair of London silver candlesticks, loaded, 17cm high.<br/><b>£100-200</b></p> <p>178 A Middle Eastern white metal Quran holder, of pierced cylindrical form with onion shaped detachable cover, 24.5cm high, 7.3 troy ozs.<br/><b>£100-200</b></p> <p>179 A silver plated sweet meat basket, with Bristol blue glass liner, 16cm high with handle raised x 10cm diameter.<br/><b>£40-80</b></p> <p>180 An Art Deco Birmingham silver coffee pot, by Adie Bros, of ovoid form, 16.5cm high, gross weight 11.3 troy ozs.<br/><b>£100-150</b></p> <p>181 A Sheffield silver christening mug, 9cm high, 5.9 troy ozs.<br/><b>£70-150</b></p> |
|---|---|



## Antique, Fine Art & Interiors Sale, 24th Sep, 2025 - 25th Sep, 2025

- 182 An Edwardian silver tumbler cup, by H. Freeman, London, 1901, with engraved vacant cartouche and gilt interior, 6.5cm high, 4.5 troy ozs.  
**£60-100**
- 183 A George II Scottish silver sugar caster, by Benjamin Coutts, assay-master Hugh Gordon, Edinburgh 1758, of baluster form, with engraved crest, 18cm high, 7.7 troy ozs.  
**£100-200**
- 184 A George III silver two-handled loving cup, makers mark of the Batemans, London 1810, 14cm high, 14.9 troy ozs.  
**£150-200**
- 185 A pair Edwardian Irish silver two-handled flower vases, by E. Johnston, Dublin 1910, each with an embossed band of Celtic pattern knots, 18cm high (2).  
**£40-60**
- 186 A Birmingham silver mounted cut glass circular shaped dressing table pot and cover, 14cm diameter; together with five assorted silver mounted dressing table jars/ bottles.  
**£70-150**
- 187 A Sheffield silver four piece tea set comprising teapot, hot water pot, twin-handled sugar bowl and cream jug, gross weight 58.7 troy ozs.  
**£1,000-1,500**
- 188 Four assorted silver photograph frames.  
**£40-80**
- 189 A collection of assorted silver ware to include a pair of five bar toast racks; two oval salts with Bristol blue glass liners; a pair of pepper pots; a shell shaped dish; a silver mounted bottle stand; a silver and blue enamel whisky label; a yellow and black enamel circular silver patch box; a circular dish; a salt spoon; and thimble.  
**£70-150**
- 190 A collection of four assorted white metal and gem set bracelets.  
**£50-100**
- 191 A collection of six assorted bracelets to include silver gilt example; two silver examples; and three white metal gem set examples.  
**£50-100**
- 192 Coq Nain, a Lalique clear and frosted glass model of a Phantom Rooster, signed 'Lalique, France', chip to point of top tail feather, 20cm high; together with a smaller Lalique clear and frosted glass model of a bird, 9.5cm high.  
**£100-200**
- 193 A group of Japanese bronze sword fittings comprising three pairs of Fuchi and Kashira.  
**£100-200**
- 194 A late 18th century shagreen spectacles case with unmarked silver mounts, 13cm long.  
**£40-60**
- 195 A Victorian ruby glass double-ended scent flask, probably by S. Mordan & Co, of panelled cylindrical form, with engraved silver gilt mounts, unmarked, 14cm long.  
**£60-100**
- 196 An 18th century Staffordshire enamel patch box, oval shaped, the hinged cover decorated with two classical females, inscribed 'Peace rewarding Britannia', opening to a mirrored underside over a cobalt blue ground base, 5.7cm wide.  
**£70-150**
- 197 An 18th century Staffordshire enamel patch box, oval shaped, the hinged cover inscribed 'Sacred to friendship' within a cobalt blue border opening to a mirrored underside, the base with vertical line and floral dot detail, 4.5cm wide.  
**£70-150**
- 198 An 18th century Staffordshire enamel nutmeg grater, the screw cover decorated with vignette of a three-masted galleon inscribed 'A present from London' on a yellow ground, 4.5cm.  
**£70-150**
- 199 An 18th century pink ground Staffordshire enamel patch box, the hinged cover decorated with circular panel enclosing a pair of doves on a lattice ground, opening to a mirrored underside, 6cm wide.  
**£70-150**
- 200 An 18th century Staffordshire enamel patch box, oval shaped, the hinged cover inscribed 'Know then this truth enough for man to know. Virtue alone is happiness below', opening to a mirrored underside on a yellow ground base, 4.4cm wide.  
**£70-150**
- 201 A yellow metal two colour bracelet, stamped '9k', 6.6 grams.  
**£120-180**
- 202 A 9ct gold cigar piercer, 8.8 grams.  
**£120-180**
- 203 A Chinese yellow metal mounted Bi-disc, the mount stamped '14k', gross weight 6.7 grams, jade diameter 24.9mm.  
**£50-100**



## Antique, Fine Art & Interiors Sale, 24th Sep, 2025 - 25th Sep, 2025

- |  |  |
|--|--|
| <p>204 A 9ct gold mounted spinner fob, set with citrine coloured faceted stone, gross weight 15.8 grams.<br/><b>£120-180</b></p> <p>205 A yellow metal bangle, stamped '9ct', 85.7mm wide, 8.1 grams; together with a yellow metal brooch, 44.3mm wide, with later white metal pin, gross weight 4.9 grams.<br/><b>£200-300</b></p> <p>206 A white metal and blue gem stone set articulated bracelet.<br/><b>£40-80</b></p> <p>206A A 15ct gold and small rose cut diamond tie pin; and ten various tie pins (11).<br/><b>£70-150</b></p> <p>207 A pair of white and yellow metal mounted brilliant cut diamond stud earrings, one with screw fixing stamped '750', the other lacking screw fixing.<br/><b>£120-180</b></p> <p>208 Tiffany &amp; Co, a pair of silver hoop earrings designed by Elsa Peretti; together with a pair of silver gem set hoop earrings.<br/><b>£40-80</b></p> <p>209 A yellow metal bracelet, tests as 9ct gold, set with two circular panels both enclosing gold nuggets, gross weight 5.4 grams.<br/><b>£100-200</b></p> <p>210 A 9ct bracelet with a 9ct gold heart shaped lock, 7.4 grams<br/><b>£120-180</b></p> <p>211 A gilt metal mounted oval cameo brooch, 39mm long.<br/><b>£20-50</b></p> <p>212 A 9ct white gold and clear gem stone set bracelet, gross weight 6.1 grams.<br/><b>£100-200</b></p> <p>213 A Norwegian Sterling silver and blue enamel brooch; together with a pair of corresponding ear clips; and a silver and enamel flower brooch.<br/><b>£70-150</b></p> <p>214 A 9ct gold synthetic sapphire and split pearl brooch, 42.7mm wide, gross weight 3.3 grams.<br/><b>£50-100</b></p> | <p>215 A collection of assorted jewellery to include three various rings; a gilt metal Albert chain with T-bar suspension and 9ct gold circular pendant; a Sterling silver fringed necklace; two pairs of earrings; two stick pins; a 9ct white gold and gem set rectangular pendant; and a yellow metal mounted heart shaped gem set pendant.<br/><b>£50-100</b></p> <p>216 Two Danish Sterling silver flower brooches, one of stylised form, stamped 'N.E.From, Sterling, Denmark'; the other of more naturalistic form, stamped 'Johnl. Sterling, Denmark'.<br/><b>£50-100</b></p> <p>217 A 9ct gold and gem set articulated bracelet, gross weight 10 grams.<br/><b>£200-300</b></p> <p>218 A white metal, red enamel and rose cut diamond set stick pin, topped with a crown above the letter 'A', 63.4mm long, in blue velvet box marked 'J W Benson Ltd, 25 Old Bond Street, London'.<br/><b>£70-150</b></p> <p>219 A group of three 9ct gold and yellow metal bar brooches comprising a 9ct gold and three stone pearl bar brooch, 1.9 grams; two yellow metal bar brooches, each centred with a blue aquamarine coloured circular faceted stone, both stamped '9ct', gross weight 4.3 grams.<br/><b>£50-100</b></p> <p>220 Golf Interest - A 9ct gold and garnet set brooch in the form of a golfing tee, 57mm long, gross weight 2.5 grams.<br/><b>£40-80</b></p> <p>221 An Art Deco tie pin, set with diamonds and two baguette emeralds, in unmarked white metal pierced geometric mount, gross weight 2.3 grams.<br/><b>£50-100</b></p> <p>222 A gold and diamond tie pin, formed as a flowerhead with central diamond, the petals set with small diamonds, in unmarked gold mount, gross weight 2.6 grams.<br/><b>£50-100</b></p> <p>223 A gold and pearl tie pin, of entwined loop pattern, unmarked, numbered 21331, gross weight 1.8 grams.<br/><b>£30-70</b></p> <p>224 A 15ct gold tie pin, formed as a fox mask with textured detail, stamped '15ct', the spiral pin probably gold plated, gross weight 1.2 grams.<br/><b>£30-70</b></p> |
|--|--|



## Antique, Fine Art & Interiors Sale, 24th Sep, 2025 - 25th Sep, 2025

- |     |   |     |  |
|-----|---|-----|--|
| 225 | Two gold and opal single stone tie pins, one oval, the other circular, in unmarked gold mounts, gross weight 2.5 grams (2).<br><b>£30-70</b>  | 236 | A late Victorian coral bead single strand necklace, graduating from approximately 6-8 mm., the clasp stamped '9ct', 43cm long, gross weight 49 grams.<br><b>£80-120</b>  |
| 226 | A gold and diamond cluster tie pin; and two diamond single stone tie pins, in claw set mounts, all unmarked, total gross weight 4.3 grams (3).<br><b>£30-70</b>   | 237 | Eight assorted gold shirt studs comprising five 9ct gold studs, 4.1 grams; and three 18ct gold studs, 2.3 grams.<br><b>£180-250</b>  |
| 227 | A 15ct gold and diamond single stone tie pin; and a similar diamond single stone tie pin, unmarked, both in claw set mounts, total gross weight 2.7 grams (2).<br><b>£30-70</b>   | 238 | A pair of yellow metal mounted garnet stud earrings, of round brilliant cut form; together with a pair of 18ct gold mounted garnet ear studs of oval faceted form.<br><b>£70-150</b>   |
| 228 | A gold, sapphire and diamond tie pin, formed as a flowerhead with central diamond and six sapphires, in unmarked gold mount, gross weight 2.0 grams.<br><b>£30-70</b>   | 239 | An Edwardian 9ct gold pendant and chain, set with amethysts, seed pearls and peridot, in Suffragette colours, stamped '9ct', gross weight 3.1 grams.<br><b>£100-150</b>  |
| 229 | Tiffany & Co, an 18ct gold and single diamond dress stud, stamped 'TIFFANY & Co., 18k', 1.7 grams.<br><b>£30-70</b>   | 240 | A 9ct gold and gem set articulated bracelet, gross weight 16.2 grams.<br><b>£300-500</b>   |
| 230 | A French late 19th/early 20th century gold, pearl and diamond brooch, set with a central circular diamond and small rose cut diamonds and a row of twenty pearls, French gold mark to the scroll clasp, 67.6mm wide, gross weight 5.8 grams.<br><b>£150-250</b> | 241 | A late 19th/early 20th century yellow metal and rose cut diamond set oval brooch, the reverse with oval locket section, tests as 18ct gold, 37.7mm wide, gross weight 10 grams; together with another yellow metal oval locket with engraved foliate detail, 8.8 grams.<br><b>£400-600</b> |
| 231 | A gold, garnet and diamond tie pin, formed as a cross with central diamond and four garnets, in unmarked gold mount, gross weight 1.9 grams.<br><b>£30-70</b>   | 242 | A yellow metal mounted aventurine pendant, the mount tests as 18ct gold, with tassel suspension, approximately 45mm long, gross weight 4.3 grams.<br><b>£50-100</b>  |
| 232 | An antique Roman bronze coin, in a gold pendant mount with suspension loop and corded border, stamped '585', 20.3mm diameter.<br><b>£40-80</b>  | 243 | A 9ct gold charm bracelet suspending seven assorted charms and a heart shaped lock, gross weight 22.7 grams.<br><b>£500-800</b>  |
| 233 | A George III silver mounted oblong vinaigrette, gilt grille pierced with a basket of flowers, and aventurine panel to cover and base (base cracked), unmarked, c. 1810, 3.3cm wide.<br><b>£40-60</b>  | 244 | Three pairs of assorted 9ct gold and gem set earrings, gross weight 12.5 grams; together with two pairs of unmarked yellow metal and gem set earrings, 2.7 grams.<br><b>£250-400</b>   |
| 234 | A Victorian tie pin, engraved with a monogram, unmarked; and a silver paste set heart shaped pendant (2).<br><b>£40-60</b>  | 245 | A diamond and enamel Regimental brooch for the 17th Regiment, in fitted case, 24mm long x 26mm wide, 6.1 grams.<br><b>£100-200</b>   |
| 235 | A gold and oblong topaz tie pin; and an amethyst and small diamond tie pin, in unmarked gold mounts, gross weight 3.3 grams (2).<br><b>£30-70</b>   |     |  |



## Antique, Fine Art & Interiors Sale, 24th Sep, 2025 - 25th Sep, 2025

- |  |  |
|--|--|
| <p>246 A 9ct gold ruby and diamond chip pendant together with a pair of matching earrings, 2.9 grams; together with two pairs of yellow metal and coloured gem set ear studs, gross weight 2.8 grams.<br/><b>£50-100</b></p> <p>247 A vintage Rolex Submariner stainless steel automatic wristwatch, ref 5508, circa 1958, the black dial signed Rolex Oyster Perpetual 100m = 330ft SUBMARINER, on later Rolex bracelet strap, case diameter including crown 40.6mm, the case stamped 5508, 361286. Sold with original receipt of sale from James Gillougley Ltd. Paisley, dated 3/11/58, the receipt inscribed '1. Gent's steel Rolex Oyster Perpetual 25 jewel submariner wristwatch steel expanding bracelet', cash sale J. Gillougley, the watch originally belonged to the current vendor's late father who purchased it in 1958.<br/><b>£8,000-12,000</b></p> <p>248 A vintage ladies 9ct gold cased Emka bracelet wristwatch with square dial, Arabic and Baton numerals on a 9ct gold bracelet strap, 16.6 grams.<br/><b>£300-500</b></p> <p>249 A vintage ladies white metal and marcasite set cocktail watch by Bucherer, the silvered rectangular dial with Baton numerals, the inner case stamped '0800', gross weight 14 grams.<br/><b>£40-80</b></p> <p>250 A 'Mortima' gents gilt metal wristwatch, with champagne coloured dial and sweep seconds hand, c. 1960's, case diameter including crown 35.5mm.<br/><b>£40-80</b></p> <p>251 A 'Crusader' Art Deco nickel chrome wristwatch, with silvered dial and subsidiary seconds dial, part luminous hands, case no. 79C309, c. 1930's, case diameter including crown 31.7mm.<br/><b>£40-80</b></p> <p>252 A 9ct gold cased open-faced pocketwatch with black and white Roman numeral dial, case diameter 37.5mm, gross weight 39 grams, together with two keys.<br/><b>£150-300</b></p> <p>253 An 18ct gold cased open faced pocketwatch by Dent, 33 Cockspur St. London, 28831, signed on the back plate Dent Watchmaker to the Queen, 33 Cockspur St. Charing Cross, London, No. 28831, case diameter 52.5mm, gross weight 122 grams, together with a single key.<br/><b>£1,000-1,500</b></p> | <p>254 A 9ct gold 'Audax' gents wristwatch head, with silvered dial and subsidiary seconds dial, hallmarked London, 1942, case diameter including crown 31mm.<br/><b>£70-150</b></p> <p>255 Omega - a WWI silver cased gents Trench watch, with white enamel dial inscribed 'OMEGA, SWISS MADE', the inner cover stamped no. 3750171 and Swiss marks, c. 1914, case diameter including crown 37.7mm.<br/><b>£50-100</b></p> <p>256 A WWI silver cased gents Trench watch, with white enamel dial and subsidiary seconds dial, c. 1914, case diameter including crown 40.8mm.<br/><b>£50-100</b></p> <p>257 A vintage ladies Avia 9ct gold cased wristwatch baring presentation inscription to the back of the case on gold plated expandable strap; together with a vintage Oris gold plated ladies wristwatch with expandable strap.<br/><b>£50-100</b></p> <p>258 A ladies 14ct gold cased Tissot Automatic bracelet wristwatch, the circular dial with baton numerals, on a 9ct gold bracelet strap, gross weight 24 grams<br/><b>£400-600</b></p> <p>259 William A. Hepworth, a bronze walnut cast in two parts, 34.7mm x 34.6mm.<br/><b>£40-80</b></p> <p>260 A Chinese coquilla nut carving of a model junk on matching oval stand, probably 19th century, the underside of the junk finely painted with eight rows of script, the sides with three pairs of opening windows, 41.9mm long, height on stand approximately 30.5mm.<br/><b>£70-150</b></p> <p>261 A Russian lacquered rectangular box, the hinged cover painted with scene of figures in a moonlit garden, painted Russian marks, 15cm wide.<br/><b>£40-80</b></p> <p>262 A WWI British officer's field compass 'Verner's Pattern', by Short &amp; Mason Ltd, London, stamped No. 4297 over 1912, in leather carrying case.<br/><b>£40-80</b></p> <p>263 Three vintage autograph books, early 20th century, and an envelope containing a signature reputed to be Prime Minister Sir Anthony Eden.<br/><b>£20-50</b></p> |
|--|--|



## Antique, Fine Art & Interiors Sale, 24th Sep, 2025 - 25th Sep, 2025

- |   |   |
|---|---|
| <p>264 A Westminster 60th anniversary of the Dambusters Raid gold sovereign and medal cover, the sovereign dated 2003 in presentation sleeve.<br/><b>£400-600</b></p> <p>265 A vintage Bank of England five pound bank note dated 1951 July 20th London, No. V23 006924, in Westminster Collection sleeve with certificate of authenticity titled Historic White Fiver.<br/><b>£30-70</b></p> <p>266 A limited first edition Coins of 100 Nations in presentation sleeve.<br/><b>£40-80</b></p> <p>267 Three assorted antique snuff boxes.<br/><b>£20-50</b></p> <p>268 A vintage burr wood tobacco/snuff box of rounded rectangular form with wooden hinge, 8.5cm wide; together with an unusual turned wood miniature urn and cover, turned from a blondewood with unusual graining, 32.4mm high.<br/><b>£40-80</b></p> <p>269 Great War interest - a vintage Allenburys tin containing a pair of Great War medals inscribed To E. K. Alexander. B. R. C. &amp; St. J. J; together with a wax seal and two white metal distinction medals.<br/><b>£30-70</b></p> <p>270 A collection of assorted vintage coinage.<br/><b>£20-50</b></p> <p>271 A vintage leather cased military issue field compass; together with another early 20th century field compass and a brass cased compensated for temperature pocket thermometer, the leather case for the military issue field compass inscribed on the interior 'E. M. M. Alexander Captain 7th Battalion Seaforth Highlanders', inscribed with date 17/11/17.<br/><b>£40-80</b></p> <p>272 A collection of nine assorted musket balls reputedly from the wreck of HMS Dartmouth, 1690, lost in Sound of Mull.<br/><b>£50-100</b></p> <p>273 A metal detectorist's found collection of assorted antique coins, mainly British interest, all in annotated packets, by repute ranging from Charles I through to more recent times.<br/><b>£50-100</b></p> | <p>274 A 1902 Coronation medal in original red leather case; together with a 1951 Festival of Britain commemorative crown and other assorted coinage.<br/><b>£50-100</b></p> <p>275 Isle of Man Interest - a hand painted stained glass panel by William Hoggart for the T. E. Brown window, inscribed 'The Lhen', 20cm x 25cm.<br/><b>£50-100</b></p> <p>276 One leatherbound volume Narrative of the Surrender of Buonaparte by Captain F. L. Maitland, C. B. second edition, London, Henry Colburn, New Burlington Street 1826.<br/><b>£40-80</b></p> <p>277 A box of assorted costume jewellery.<br/><b>£50-100</b></p> <p>278 A Middle Eastern pierced brass spherical hand warmer/oil lamp formed in two sections with gimbal mounted interior, approximately 11cm diameter.<br/><b>£50-100</b></p> <p>279 A group of three Chinese soapstone carvings to include two similar graduated seals, 15.5cm high and 30.5cm high; together with a figure of a scholar standing holding a scroll on pierced naturalistic base, 15.5cm high.<br/><b>£50-100</b></p> <p>280 A Chinese porcelain blue, white and copper red cylindrical snuff bottle and stopper, 9cm high; together with a white metal mounted blue and white porcelain ashtray; a white metal mounted blue and white porcelain pillbox; a white metal pear shaped box and cover with red cabochon finial; a small circular white metal pillbox with oval cabochon detail; and a small porcelain trinket box in the form of a champagne cork.<br/><b>£40-80</b></p> <p>281 A box of assorted costume jewellery, to include stick pins; rings; pendants; five strand pearl necklace; etc.<br/><b>£40-80</b></p> <p>282 A box containing a collection of assorted gem set dress rings.<br/><b>£200-300</b></p> <p>283 A pair of 19th century Staffordshire pottery figures, Count Bruhl's Tailor and wife, both riding on goats, 13cm high.<br/><b>£50-100</b></p> |
|---|---|



## Antique, Fine Art & Interiors Sale, 24th Sep, 2025 - 25th Sep, 2025

- 284 Two Royal Crown Derby mansion house dwarf figures, one with hat inscribed 'Theatre Royal Hay-market..', 18cm high; the other with hat inscribed 'Auction of elegant household furniture..', 16.5cm high, both with printed marks.  
**£50-100**
- 285 Two Derby porcelain figure groups of the shoeblacks, one marked Bloor Derby in red, with incised mark 'No.77', 15.5cm high; the other with red painted crown and batons mark, 18cm high.  
**£100-200**
- 286 A Derby porcelain figure of Air, modelled standing with left arm raised, a bugle in her right hand, 18cm high; together with two other Derby porcelain figures modelled as Urania, muse of astronomy; and another of a classical female holding a rectangular tablet, 21cm high, (3).  
**£40-80**
- 287 A group of four Derby porcelain figures, allegorical of the four seasons, red painted and incised marks, approximately 18cm high, (4).  
**£100-200**
- 288 A 19th century Derby porcelain figure of Father Time, red painted mark and incised 'N.222', 16cm high.  
**£70-150**
- 289 A Royal Crown Derby porcelain figure of Summer, red and black printed marks, 22.5cm high; together with a Rudolf Kammer porcelain figure modelled as Marshal Josef Poniatowski, printed marks, 22.5cm high.  
**£40-80**
- 290 A Derby porcelain figure group of Father Time clipping Cupid's wings, 23cm high.  
**£70-150**
- 291 A Derby porcelain figure group of Calliope and two attendants, incised mark 'N.216', 25cm high.  
**£70-150**
- 292 A 19th century English porcelain figure of Napoleon Bonaparte, modelled standing with arms crossed beside a plinth inscribed 'Born August 15th 1769, Died May 5th 1821', 19.5cm high.  
**£70-150**
- 293 A pair of Sitzendorf porcelain figures, the male figure model standing holding a pipe in his right hand, the female figure model standing holding a basket of fruit in her right hand, blue printed marks, 19cm high.  
**£40-80**
- 293A A pair of 19th century Flight Barr & Barr cobalt blue ground hand-painted porcelain miniature urns/cash pots, both decorated with named views, one Malvern Church, Worcestershire, and Near Matloch Bath, Derbyshire; the other Malvern Wells, Worcestershire and Warwick Castle, 8.6cm high.  
**£70-150**
- 293B A pair of Meissen porcelain figures, late 19th/early 20th century, modelled with male figure standing beside a barrel holding barrel taps in his left hand, the companion female figure standing beside a barrel filling a glass from a jug, blue crossed swords mark, 17.5cm high.  
**£200-400**
- 294 A 19th century Derby porcelain bocage figure group, modelled with two hunters, boy and game birds, on a rectangular plinth base, red painted crown and batons mark, 29cm high x 16.5cm wide.  
**£100-200**
- 295 A pair of Derby porcelain figure groups, Rinaldo and Armida with another, 18.5cm high and 21cm high.  
**£150-300**
- 295A A late 19th/early 20th century handmade model of a three-masted gallion, mounted on a rectangular plinth with painted details, 26cm wide x 18.5cm high.  
**£40-80**
- 296 An early 20th century yellow metal and amethyst set necklace, set with nine various coloured oval faceted amethysts, the mount stamped '9ct', gross weight 12.4 grams.  
**£100-200**
- 296A Ogham, a silver bracelet set with various assorted silver cylindrical form links and two gold links, gross weight 25.5 grams; together with a silver and blue enamel ring and two silver bangles.  
**£50-100**
- 296B A white metal and diamond set hinged bangle, channel set with a line of nineteen small round brilliant cut diamonds, stamped '10k', 8.3 grams.  
**£150-300**
- 297 An 18ct white gold ceylon blue sapphire and diamond cluster ring, ring size M 1/2, gross weight 3.7 grams.  
**£300-500**



## Antique, Fine Art & Interiors Sale, 24th Sep, 2025 - 25th Sep, 2025

- 297A A platinum rub over set diamond ring, set with eight assorted round brilliant cut diamonds, combined diamond weight estimated at 1.67ct, ring size M, gross weight 8.5 grams.  
**£400-600**
- 297B An 18ct white gold and diamond set open circular pendant, studded with round brilliant cut diamonds on both sides, 15.1mm diameter, 2.7 grams; together with a pair of 14ct white gold and diamond hoop earrings, approximately 14mm diameter, gross weight 3.4 grams.  
**£200-300**
- 298 Seventeen Austrian silver Thalers, Maria Theresia, dated 1780, 473 grams, together with three Elizabeth II commemorative crowns.  
**£50-100**
- 298A Two later yellow metal mounted Austrian silver gilt Thalers, Maria Theresia, both dated 1780, the yellow metal mounts testing as 18ct gold, approximate weight of the yellow mounts 18.5 grams.  
**£700-1,000**
- 298B A London silver blue enamel and paste set necklace, together with a pair of matching earrings, gross weight 40.4 grams.  
**£40-80**
- 299 A small group of jewellery to include a yellow metal necklace suspending coloured gem set pendant; a yellow metal and paste set circular locket and three assorted yellow metal lockets.  
**£50-100**
- 299A An early 20th century yellow metal opal and peridot set pendant and chain, the chain stamped '14K', gross weight 5.4 grams.  
**£120-180**
- 299B A late 19th century yellow metal and garnet set circular brooch, tests as 14ct gold, gross weight 8.7 grams.  
**£100-200**
- 299C A white and yellow metal three stone diamond set bar brooch, stamped '18ct', 58.4mm long, gross weight 4.5 grams.  
**£120-180**
- 300 A long 9ct gold necklace, 19.6 grams; together with a gold plated necklace.  
**£400-600**
- 300A A yellow metal open-faced pocketwatch with Roman numeral dial, the inside of the back cover stamped '18K', overall diameter 37.2mm, gross weight 33.3 grams.  
**£150-250**
- 300B A white and yellow metal solitaire diamond ring, set with a single old cut diamond, the shank stamped '14K', ring size L, gross weight 1.7 grams; together with a white and yellow metal five stone diamond ring, size J, 2.1 grams; and a gold coloured ring stamped 'Hong Kong', cut, (3).  
**£120-180**
- 301 A white metal and diamond cluster ring, size M, stamped '14K', 3.6 grams; together with a white metal and diamond single stone ring, size L, 2.1 grams; and a white metal wedding ring stamped '18K', size M 1/2, 1.9 grams, (3).  
**£120-180**
- 301A A yellow metal Art Deco style square brooch and pair of matching earrings, all stamped '14K', gross weight 13.3 grams.  
**£450-650**
- 301B A white and yellow metal diamond and pink tourmaline bar brooch, centered with pink rectangular faceted tourmalines, flanked by two small old cut diamonds, 61mm long, gross weight 3.4 grams.  
**£120-180**
- 302 A white metal mounted amethyst and diamond set pendant suspended on white metal chain, stamped '14K', the pendant set with pear shaped amethyst, the bail set with a row of four graduated small brilliant cut diamonds, the mount stamped '750', gross weight 7.1 grams.  
**£120-180**
- 302A An unusual Art Deco yellow metal pink paste and seed pearl pendant necklace, gross weight 9.5 grams.  
**£120-180**
- 302B An early 20th century yellow metal and aquamarine pendant necklace, stamped '9c', gross weight 4.4 grams.  
**£120-180**
- 303 A Chinese pale celadon jade pendant carved and pierced in the form of a goose on a yellow metal mount centered with an orange agate ball, 45.8mm wide by 27.2mm, overall 18.5 grams.  
**£70-150**
- 303A A yellow metal mounted oval carnelian cabochon brooch, the mount stamped '9ct', 35.5mm by 25.6mm, gross weight 20 grams.  
**£70-150**
- 303B A yellow metal necklace, tests as 9ct gold, 7 grams, suspending a yellow metal gem set pendant, tests as 18ct gold, 2.5 grams.  
**£250-400**





## Antique, Fine Art & Interiors Sale, 24th Sep, 2025 - 25th Sep, 2025

- |  |  |
|--|--|
| <p>304 A yellow metal double rose brooch, stamped 'Forstner, 10KT', approximately 30.1mm diameter, 8.6 grams.<br/><b>£150-250</b></p> <p>304A A ladies gold plated Omega wristwatch on 9ct gold bracelet strap, gross weight 14.2 grams.<br/><b>£120-180</b></p> <p>304B A yellow metal necklace, tests as 9ct gold, 3.6 grams, suspending a 9ct gold mounted cameo, 8 grams.<br/><b>£120-180</b></p> <p>304C A white metal diamond and pearl set brooch, tests as 9ct gold, 47.9mm long, gross weight 4.2 grams.<br/><b>£100-200</b></p> <p>304D A 9ct gold necklace suspending yellow metal diamond and aquamarine coloured pendant, gross weight 4.9 grams.<br/><b>£120-180</b></p> <p>304E A late 19th century white metal mounted diamond set star pendant suspended on a later white metal necklace stamped '585', gross weight 6.8 grams.<br/><b>£120-180</b></p> <p>304F An early 20th century white and yellow metal garnet and diamond chip cluster ring, size M, shank stamped '9ct'.<br/><b>£70-150</b></p> <p>304G A 9ct gold mourning ring set with vacant shield and panels of woven hair, size O, 2 grams; together with a 9ct gold split pearl and garnet set ring, stones missing, size Q, gross weight 1.3 grams, (2).<br/><b>£70-150</b></p> <p>304H A yellow metal necklace, tests as 9ct gold, suspending a late 19th century yellow metal garnet and split pearl pendant stamped '9ct', gross weight 5.5 grams.<br/><b>£120-180</b></p> <p>304I A group of yellow metal mounted amethyst set jewellery, comprising an impressive single stone ring, size N, tests as 18ct gold; together with a yellow metal mounted pear shaped pendant, tests as 18ct gold; and a pair of single stone pendant earrings, tests as 18ct gold, gross weight 25.8 grams, (4).<br/><b>£150-300</b></p> <p>304J A yellow metal pendant in the form of the Acropolis, stamped '18k'; together with a yellow metal pendant in the form of an Egyptian head in profile, both test as 18ct gold, 7.1 grams, (2).<br/><b>£300-500</b></p> | <p>304K An 18ct gold wedding ring, size O, 6.3 grams.<br/><b>£250-400</b></p> <p>305 A 9ct gold cameo set ring, size P 1/2; together with a 9ct gold mounted oval cameo brooch, gross weight 10 grams, (2).<br/><b>£70-150</b></p> <p>305A A white and yellow metal three stone diamond ring, the shank stamped '18ct', size N, gross weight 2.4 grams; together with a white and yellow metal five stone diamond ring, the shank stamped '18ct plat', size N, gross weight 1.7 grams, (2).<br/><b>£120-180</b></p> <p>305B A white metal mounted princess cut single stone diamond pendant on white metal chain, stamped '14k', the diamond estimated to weigh 0.30ct, gross weight 1.5 grams.<br/><b>£120-180</b></p> <p>305C A yellow metal and amethyst set sunburst pendant, suspended on yellow metal necklace, stamped '9ct', the sunburst pendant tests as 9ct gold, gross weight 6.8 grams.<br/><b>£120-180</b></p> <p>305D A 14ct gold charm bracelet suspending four assorted yellow metal charms, stamped '585', tests as 14ct gold, gross weight 37.4 grams.<br/><b>£1,200-1,800</b></p> <p>305E A 9ct gold and garnet set single stone ring, size O, 2.5 grams; together with a 9ct gold and garnet cluster ring, size N, gross weight 1.7 grams, (2).<br/><b>£70-150</b></p> <p>305F A 9ct gold and two pearl set ring, size O; together with a 9ct gold and pearl single stone ring, size O, gross weight 4.6 grams, (2).<br/><b>£70-150</b></p> <p>305G A 9ct gold line brooch, 64.2mm long, 4.7 grams; together with a 9ct gold riding crop and horseshoe brooch, gross weight 1.8 grams, (2).<br/><b>£120-180</b></p> <p>305H Three assorted 9ct gold rings, 7 grams.<br/><b>£120-180</b></p> <p>305I A yellow metal mounted Scottish pebble set lozenge shaped brooch, centred with oval faceted citrine coloured gemstone, the mount inscribed 'Gold', tests as 9ct gold, 57.2mm wide x 43.5mm.<br/><b>£150-300</b></p> <p>306 A 22ct gold wedding ring, size O, 3.2 grams.<br/><b>£150-250</b></p> |
|--|--|



## Antique, Fine Art & Interiors Sale, 24th Sep, 2025 - 25th Sep, 2025

- |  |  |
|--|--|
| <p>307 Two 9ct gold coloured gemstone set dress rings, 3.3 grams.<br/><b>£70-150</b></p> <p>308 A pair of Birmingham silver quaichs, 14cm diameter, 4.6 troy ozs.<br/><b>£70-150</b></p> <p>309 An antique silver toddy ladle with coin set bowl and part baleen twist handle, 35cm long.<br/><b>£40-80</b></p> <p>310 A collection of thirty two assorted silver bladed and mother-of-pearl pocket/ fruit knives, together with five other similar pocket knives.<br/><b>£70-150</b></p> <p>311 A set of eight Edinburgh silver menu/ placecard holders modeled with pheasant, fox, stag, duck, snipe, grouse, horse, and retriever, 3.4 troy ozs.<br/><b>£50-100</b></p> <p>312 A set of four fox and hound silver knife rests, 8cm long, 5 troy ozs.<br/><b>£70-150</b></p> <p>313 A Birmingham silver helmet shaped cream jug; together with a Birmingham silver seven bar toast rack, gross weight 5.8 troy ozs.<br/><b>£70-150</b></p> <p>314 A near pair of Birmingham silver sauce boats, 6 troy ozs.<br/><b>£70-180</b></p> <p>315 Three assorted silver sauce boats, 16.6 troy ozs.<br/><b>£250-400</b></p> <p>316 A Birmingham silver hot water pot, 21cm high, gross weight 19.9 grams.<br/><b>£300-500</b></p> <p>317 A collection of assorted silver flatware, 13.7 troy ozs.<br/><b>£250-400</b></p> <p>318 A collection of assorted silver flatware, fiddlepattern, comprising table spoons, table forks, dessert spoons, dessert forks, unengraved, 55 troy ozs.<br/><b>£1,000-1,500</b></p> <p>319 A collection of assorted silver flatware, fiddlepattern, engraved with initials, comprising table spoons, table forks, dessert spoons, dessert forks, 78.9 troy ozs.<br/><b>£1,200-1,800</b></p> <p>320 A Sheffield silver teapot and matching hot water jug, gross weight 34.8 troy ozs.<br/><b>£500-800</b></p> | <p>321 An antique Edinburgh silver mounted dirk, makers mark S&amp;H, the handles with carved knotwork detail with targe shield details, 46cm long.<br/><b>£500-800</b></p> <p>322 An Edinburgh silver mounted dirk, makers mark RA, the handles with knotwork detail and foilbacked orange coloured gemstones, the mounts embossed with thistles, 49cm long.<br/><b>£500-800</b></p> <p>323 Two antique percussion cap muff pistols together with a box of assorted percussion cap tins etc.<br/><b>£50-100</b></p> <p>324 A copper and brass powder flask together with a brass and embossed leather shotflask.<br/><b>£30-70</b></p> <p>325 A Monart glass Mushroom lamp and shade, mottled yellow, orange and brown with gold coloured inclusions and typical decoration of whorls, with original chrome plated double light lamp fixture, 34cm high.<br/><b>£300-500</b></p> <p>326 A mahogany cased barograph, Adie &amp; Wedderburn Edinburgh, 36.5cm wide x 21cm high.<br/><b>£50-100</b></p> <p>327 Two mid 20th century African brass and wood figure groups, one carved with a female figure sitting in a hammock suspended on a pole carried by two male figures, 32.5cm long x 15cm high, the other carved as a canoe set with two females and two male paddlers, complete with original oars, 45cm long x 16.5cm high.<br/><b>£40-80</b></p> <p>328 A group of assorted objects to include a pair of Parian porcelain cherubs, 15cm high; an antique wood and paper covered puzzle/game with artist seated at an easel with rotating image panel below, 12cm x 12.5cm; a beadwork decorated doll's house chair, 10cm high; a small tin plate model steamer, 16cm long; and a small alabaster urn set with four doves, approximately 9cm high.<br/><b>£50-100</b></p> <p>329 An early 20th century bayonet and scabbard, the blade inscribed 'Remington 1913', overall 58cm long.<br/><b>£30-70</b></p> |
|--|--|



## Antique, Fine Art & Interiors Sale, 24th Sep, 2025 - 25th Sep, 2025

- |  |  |
|--|--|
| <p>330 Foochow, a pair of Chinese lacquered vases, late 19th/early 20th century, pear shaped with silvered decoration of bamboo, raised on integral stands bearing 'Foochow, China' marks, in a fitted box, 16.5cm high.<br/><b>£50-100</b></p> <p>331 Robert 'Mouseman' Thompson, a carved oak fruit bowl, carved to the centre with signature mouse, 29.5cm diameter.<br/><b>£50-100</b></p> <p>332 An early 20th century brass carriage clock, the black and white dial with Roman numerals, 14.5cm high with handle raised; together with 19th century rosewood and marquetry inlaid mantle clock with circular black and white Roman numeral dial, movement altered and changed to later battery operated movement, 21cm high.<br/><b>£40-80</b></p> <p>333 A pair of Chinese porcelain famille verte jars and covers later mounted with gilt metal mounts forming three-light candelabra, the oval shaped jars and covers with fluted detail decorated with pavilions and figures, with winged mythical beast handles raised on four elephant mask supports, the domed covers set with three scroll candle branches, approximately 40cm high.<br/><b>£500-800</b></p> <p>334 An Antique carved wooden pipe rack, 52cm high x 26cm wide.<br/><b>£30-70</b></p> <p>335 A pair of late 19th century gilt metal mounted, twin-handled alabaster urns and covers, the urns with applied mask and foliate scroll mounts, raised on sockle base and octagonal plinth with eight bun feet, the domed covers with bud shaped finials, 25.5cm high.<br/><b>£70-150</b></p> <p>336 A pair of bronze Marly Horse figure groups after Guillaume Coustou, 40cm high.<br/><b>£300-500</b></p> <p>337 A pair of L&amp;G Telstar 20 x 50 field binoculars, No. 70531, in fitted leather case.<br/><b>£20-50</b></p> <p>338 David Cornell, a bronze figure group 'Champion finish', signed and dated 1985 in the bronze, mounted on a black polished marble plinth base, 19cm high x 21.5cm wide.<br/><b>£70-150</b></p> | <p>339 A late 19th/early 20th century gilt metal mounted marble plinth with clock insert, the clock insert with black, white and coloured circular enamel dial bearing Arabic numerals, the mottled red marble plinth raised on four gilt metal feet, 16.5cm square x 8cm high.<br/><b>£40-80</b></p> <p>340 A late 19th century French bronze and black marble desk stand mounted with a seated gladiator, two oval dishes and three ink wells with detachable covers, the pedestal of the gladiator figure inscribed 'F. Barbedienne, Fondateur', 34cm high x 40cm long x 34cm wide.<br/><b>£400-600</b></p> <p>341 Johnson, London, a 19th century rosewood mantle clock, the rectangular silvered dial with Roman numerals and single fusee movement, within architectural case raised on four gilt metal bun feet, 24cm high x 17cm wide.<br/><b>£500-800</b></p> <p>342 A late 19th/early 20th century French Rococo style walnut and gilt metal mounted mantle clock, the circular enamel dial with Arabic and Roman numerals, the twin train movement striking on a coiled gong, 34cm high x 18.5cm wide.<br/><b>£100-200</b></p> <p>343 A late 19th century Paris porcelain Rococo style mantle clock, the circular dial with Roman numerals and twin train movement striking on a bell within a Rococo style case, the details picked out in green and gilt, 37cm high x 21cm wide.<br/><b>£200-300</b></p> <p>344 An early 20th century brass cased carriage clock, the serpentine case set with four clear bevelled glass panels, the circular Arabic numeral dial with subsidiary alarm dial striking on a bell, the case with blind fret work details, 15.5cm high with handle raised.<br/><b>£40-80</b></p> <p>345 Asprey of London, an oversized Birmingham silver mounted clear glass oviform vesta holder with horizontal ribbed detail, 13.5cm high.<br/><b>£50-100</b></p> <p>346 Louis Bazin, an early 20th century French violin bow, stamped marks, with mother-of-pearl inlaid details, 74cm long.<br/><b>£200-300</b></p> |
|--|--|



## Antique, Fine Art & Interiors Sale, 24th Sep, 2025 - 25th Sep, 2025

- |   |   |
|---|---|
| <p>347 A small late 19th/ early 20th century Continental porcelain Bisque head doll, with open eyes and moor hair wig plated in a ponytail, with ceramic lower arms and lower legs, wearing a blue pleated dress with lace collar and belt, 29cm long.<br/><b>£40-80</b></p> <p>348 An Italian mandolin, Stridente, Napoli, with butterfly inlaid detail to the case, inscribed on paper label within, 60cm long.<br/><b>£50-100</b></p> <p>349 A 19th century French violin, labelled Francois Barzoni, inscribed on paper label within 'Francois Barzoni, A Chateau Bierry No.265, dated 1864', 35.5cm long excluding button, in a later case.<br/><b>£200-300</b></p> <p>350 Marriott, London, a George III mahogany inlaid mantle clock, the circular convex dial with Roman numerals, the twin train movement striking on a bell, the back plate inscribed 'Marriott, London', the case with oval inlaid detail, raised on four gilt metal bracket feet, 45cm high x 30cm wide.<br/><b>£400-600</b></p> <p>351 A late 19th century burr walnut bracket clock, the brass dial with silver chapter ring bearing Arabic and Roman numerals, the twin train movement striking on a coiled gong within architectural case raised on four square shaped feet, 34cm high x 26cm wide.<br/><b>£150-300</b></p> <p>352 A late 19th/ early 20th century Fossiliferous limestone/ marble rectangular desk stand with dished pen tray section, 25.5cm x 19cm.<br/><b>£40-80</b></p> <p>353 A late 19th century mother-of-pearl inlaid Amboyna writing slope, with ebonised and white metal lined detail, 35.5cm wide; together with a late 19th/ early 20th century stained wood , ebonised and brass mounted desk stand, with hinged cover opening to reveal two white ceramic ink pots, 17cm wide; and a late 19th century mahogany rectangular box, the cover with brass inlaid plaque to the centre, 20.5cm wide.<br/><b>£40-80</b></p> <p>353A A 19th century mahogany and brass bound peat bucket, with two horizontal brass bands and hinged swing handle with detachable metal liner, 42.5cm high to top of rim.<br/><b>£400-600</b></p> | <p>354 A 19th century walnut Gothic Revival tabletop specimen cabinet dated 1849, of architectural form, the frieze bearing Roman numerals dating to 1849 above a panelled cupboard door with two Gothic arches and three quatrefoil roundels, of which two bear initials F and A, the third initial no longer present, opening to a fitted interior with twelve small graduated drawers over a longer drawer at the base, raised on four bun feet, 53cm high x 32.5cm wide.<br/><b>£300-500</b></p> <p>355 A late 19th century oil burning heater lamp with ruby glass shade, 49cm high.<br/><b>£30-70</b></p> <p>356 A late 19th century penwork box decorated with figures, containing a collection of assorted items to include a bundle of Magic Lantern slides; assorted turned wooden napkin rings; a small oval enamel plaque decorated with the Madonna to one side and verse to the other; a carved stone Nandi type rule; and various other assorted items.<br/><b>£40-80</b></p> <p>357 A pair of vintage Bausch &amp; Lomb 7x50 binoculars, in fitted leather case.<br/><b>£20-50</b></p> <p>358 A collection of assorted American coinage to include various loose 1964 half dollars; six unopened rolls of \$2 nickel coins; and various banknotes.<br/><b>£40-80</b></p> <p>359 An antique mahogany and brass bound three draw telescope, inscribed 'Day &amp; Night', 84cm long extended.<br/><b>£30-70</b></p> <p>360 A 20th century East Asian painted and silk scroll, the centre panel illustrating the death of the Buddha Sakyamuni and his entry into Nirvana, 105cm long x 24cm wide.<br/><b>£40-80</b></p> <p>361 Thwaites &amp; Reed, Clerkenwell, London, a 19th century mahogany Gothic Revival bracket clock, the silvered dial with Roman numerals and subsidiary strike silent dial, the three train fusee movement striking on nine bells, the dome top case with triple cluster columns and gilt metal collars, raised on four gadrooned bun feet, 70cm high x 39cm wide.<br/><b>£800-1,200</b></p> |
|---|---|



## Antique, Fine Art & Interiors Sale, 24th Sep, 2025 - 25th Sep, 2025

- |   |  |
|---|--|
| <p>362 A late 19th century French ormolu and marble mantle clock, the circular convex dial with Arabic and Roman numerals, the twin train movement striking on a bell, no longer present, the case with oval dished surmount centred by a vase of flowers, supported on four concave supports with ram's mask terminals, on a breakfront plinth with acanthus cast detail, 60cm high x 52cm wide.<br/><b>£400-600</b></p> <p>363 A collection of twelve Royal Mint United Kingdom proof coin sets, circa 1983-1999.<br/><b>£50-100</b></p> <p>364 A box of assorted coins, some metal detectorist finds, in various boxes, annotated 'silver scrap'; 'special coins?'; 'foreign coins'; 'Isle of Man coins'; 'America/Canada'; 'Gallows/ Hangmans Hill'; British decimal coins, tokens, etc.<br/><b>£100-200</b></p> <p>365 A collection of assorted metal detectorist finds, contained with various boxes, some inscribed as follows 'Spurs/Hammer silver coins'; 'Kenly Law'; 'Silage Stubble'; 'Bag/Cloth seals to draw'; 'Saddlers harness badges'; 'Mutton Hole'; 'Kenly Burn 2016'; 'Farm cottages'; 'Silage Stubble 2014'; 'Bucklefield'; 'Kilduncan'; 'By Primrose'; 'Lawdrum lead and bombs'; 'Lower/ upper Kenly Road'; 'K Paddock'; 'Railway/ Kilduncan No Mans Land'; 'UK Bugs old pasture'; 'Railway field, Rockhead'; 'Shoreline Boarhills'; 'Behind straw shed'; 'Craiglen Varden'; 'Runway'; 'Lesser Law'; 'Pot mens'; 'UK cottages'; 'Railway bankside'; a plethora of unusual and interesting items.<br/><b>£100-200</b></p> <p>366 Three boxes of assorted metal detectorist finds, annotated on boxes to include 'Artifacts to clean, draw and preserve'; 'metal detecting, cleaning, drawing, protecting, general'; 'Bronze'; 'Roman'; a plethora of unusual and interesting items.<br/><b>£100-200</b></p> <p>367 A collection of assorted 19th century and later coins, contained within a fitted a case over five trays, to include an 1890 Victorian crown.<br/><b>£50-100</b></p> <p>368 A collection of assorted coins in a fitted case, contained over five fitted trays, mainly 20th century.<br/><b>£50-100</b></p> <p>369 A collection of assorted 19th century and later coins, contained within a fitted coin case over three fitted trays.<br/><b>£50-100</b></p> | <p>370 A Chinese carved wood figure of a fisherman, later mounted as a table lamp, carved standing holding a fish with shell detail for the eyes, 49cm high.<br/><b>£100-200</b></p> <p>371 Two vintage wood and brass table top postage scales, and assorted weights, approximately 23cm wide.<br/><b>£30-70</b></p> <p>372 A carved wood octagonal shaped tray with raised gallery, 49cm x 34cm.<br/><b>£40-80</b></p> <p>373 A double sided Paisley type shawl worked in black, orange and red coloured threads, with all-over scroll design, fringed, overall size including fringe 144cm x 144cm.<br/><b>£40-80</b></p> <p>374 A Chinese porcelain famille rose export mug, Qing dynasty, decorated with oval shaped panel enclosing figures, 15.5 cm high.<br/><b>£40-80</b></p> <p>375 A green, white and ochre glazed table centrepiece, centred with a shell supported by two hares, 28.5cm wide x 16cm high.<br/><b>£40-80</b></p> <p>376 Two Chinese blue and white porcelain circular shaped drip trays, painted with flowers and foliage, 12cm diameter.<br/><b>£30-70</b></p> <p>377 An extensive Royal Albert Old Country Roses pattern part teaset.<br/><b>£100-200</b></p> <p>378 A Prattware part fruit set, transfer printed with scenes of figures in a garden, within ochre ground borders, the details picked out in gilt, comprising thirteen plates, 22.5cm diameter; a pair of comports, 25cm diameter x 15cm high; a low comport, 25cm diameter x 7cm high; and a larger twin-handled comport, 34.5cm wide x 23cm high.<br/><b>£50-100</b></p> <p>379 A Chinese porcelain blue and white circular shaped twin-handled tureen and cover, Qing dynasty, possibly Kangxi, decorated with rock work, flowers and foliage, the handles formed as stylised masks, 18cm diameter x 12.5cm high.<br/><b>£400-600</b></p> |
|---|--|



## Antique, Fine Art & Interiors Sale, 24th Sep, 2025 - 25th Sep, 2025

- |  |  |
|--|--|
| <p>380 A set of four Copeland Spode cobalt blue ground Aesthetic Movement fruit plates, each decorated with a bird in flight and foliate branch, within richly gilded and jewelled borders, printed marks, 21cm diameter; together with a decorative Chinese porcelain plate decorated with cockerels; and a Limited Edition plate 'The Isle of Circe' by Alan Brunettin.<br/><b>£40-80</b></p> <p>381 A pair of Staffordshire pottery King Charles Spaniels, with tan coloured markings, 23cm high; together with a similar smaller pottery model, 11cm high.<br/><b>£20-50</b></p> <p>382 A Japanese cloisonne jar and cover, late 19th/ early 20th century, 18cm high.<br/><b>£40-80</b></p> <p>383 A collection of nine assorted ceramic figures to include Lladro girl and scarecrow; Lladro clown; Lladro swan; and Lladro butterfly; Coalport figure 'Visiting Day' No.7886; Coalport 'Ladies of Fashion, Pamela'; Royal Worcester figure 'Winter', limited edition No.460/7500; Poole pottery model of an Owl, signed 'Linley-Adams'; and a Limoges ceramic model of a bird on branch.<br/><b>£40-80</b></p> <p>384 A pair of 19th century English porcelain figural candelabra, one modelled with a male figure playing the pipes with attendant dog, the other a female playing a mandolin with attendant lamb, both with two foliate cast candle sconces and applied flower encrusted decoration, raised on scroll and shell feet, the details picked out in puce and gilt, 21cm high.<br/><b>£100-200</b></p> <p>385 A collection of assorted items to include a red and ochre ground cloisonne jar, early 20th century, 9.5cm high; three blue ground cloisonne enamel napkin rings; a Satsuma pottery bowl, 8cm high x 10cm diameter; a white metal mounted wooden dish, 9cm diameter; and a pair of yellow tinted glass decanters and stoppers, 19cm high.<br/><b>£20-50</b></p> <p>386 A Chinese white ground cloisonne footed bowl, decorated with a dragon and flowering branches, 30.5cm diameter x 9cm high.<br/><b>£40-80</b></p> <p>387 A set of sixteen late 19th/early 20th century tumblers, each with faceted lower sections and etched border of fruiting vine, 9.5cm high.<br/><b>£40-80</b></p> | <p>388 A Japanese Imari porcelain vase, late 19th/ early 20th century, 30cm high.<br/><b>£30-70</b></p> <p>389 A 19th century English pottery Toby Jug and cover modelled in the form of a jester, with red, black and gilt painted details, 30cm high.<br/><b>£30-70</b></p> <p>390 A pair of Japanese Imari porcelain jars and covers, late 19th/early 20th century, decorated with rectangular shaped panels enclosing flowering branches and birds, 33cm high.<br/><b>£100-200</b></p> <p>391 A Capodimonte ceramic figure of two huntsman seated at a table, 20cm high.<br/><b>£40-80</b></p> <p>392 A Dresden porcelain flower encrusted table centrepiece, the oval bowl supported on a tree like column flanked by putti, 27cm high.<br/><b>£40-80</b></p> <p>393 A pair of Japanese Imari porcelain jars and covers, of fluted form, painted with panels of baskets issuing flowers and foliage, the domed covers with Shishi and ball finials, 26cm high.<br/><b>£70-150</b></p> <p>394 A late 19th/ early 20th century electroplated twin-handled serving dish and cover, the pierced cover with goat finial, opening to an interior with detachable opaque glass liner, mounted on a pierced twin-handled base with four scroll feet, 23cm wide x 14.5cm high.<br/><b>£40-80</b></p> <p>395 A Derby porcelain figure group of Isabella, Gallant and Jester, 27cm high.<br/><b>£100-200</b></p> <p>395A A late 19th/early 20th century Continental porcelain figural table centrepiece or comport, probably Sitzendorf, with flower encrusted details, the bowl with pierced border at the rim, 45cm high.<br/><b>£100-200</b></p> <p>396 A collection of assorted miniature single malt and blended Scotch whiskies to include Macallan; Talisker; Springbank; Glenfiddich; etc.<br/><b>£40-80</b></p> <p>397 A late Victorian silver plated large two-handled tea tray, with foliate decoration, 77cm x 46.5cm.<br/><b>£100-200</b></p> |
|--|--|



## Antique, Fine Art & Interiors Sale, 24th Sep, 2025 - 25th Sep, 2025

- |  |   |
|--|---|
| <p>398 A group of Chinese porcelain, Qing dynasty, to include a fluted cylindrical mug with famille rose decoration of scattered flowers, with later metal handle, 12cm high; an Imari tankard, 13cm high; and a famille rose tea cannister decorated with panels of initials, 10cm high.<br/><b>£40-80</b></p> <p>399 A Chinese Imari porcelain plate, Qing dynasty, decorated with scattered foliate sprays, 22.5cm diameter; together with two Japanese Imari porcelain bowls, one of faceted decagon shape, 16cm diameter x 8cm high, the other of traditional rounded form, with four character mark to base, 12cm diameter x 8cm high.<br/><b>£50-100</b></p> <p>400 A Japanese Imari porcelain vase, late 19th/early 20th century, of fluted form, decorated with fan shaped panels enclosing fenced gardens of chrysanthemum, divided by panels of urn stands supporting flaming pearls, 30cm high.<br/><b>£40-80</b></p> <p>401 A group of Asian works of art to include three various carved wood stands; a Chinese blue ground canton oval dish, 13cm wide; and a Japanese green ground shaped rectangular cloisonne tray, decorated with three butterflies, 50cm x 9cm.<br/><b>£20-50</b></p> <p>402 A large Chinese porcelain celadon ground floor standing famille rose vase, Qing dynasty, decorated in shallow relief with two rectangular shaped panels enclosing various scholars, warriors and other figures on a ground decorated with butterflies, peony and fruit, the neck with applied stylised dragon form handles and two rectangular shaped panels enclosing figures in boats, 85cm high.<br/><b>£2,000-3,000</b></p> <p>403 A pair of Chinese porcelain famille rose Canton vases, Qing dynasty, decorated with panels of court figures and panels of flowers, birds and insects on a richly gilded ground with flower and butterfly detail, the shoulders set with pairs of Chilong, the necks set with pairs of Shishi, 62cm high.<br/><b>£800-1,200</b></p> <p>404 A Chinese porcelain Wucai jar and later cover, the jar decorated with seven figures, rock work and palm trees below cloud scrolls and two vertical rows of character marks, all under a Greek key type border at the rim, the later cover with Shishi finial, overall 40cm high.<br/><b>£300-500</b></p> | <p>405 A Japanese Imari porcelain dish, late 19th/early 20th century, decorated with a long-tailed phoenix bird standing in a garden of chrysanthemum within a blue ground panelled border, 31cm diameter.<br/><b>£40-80</b></p> <p>406 A collection of assorted 19th century blue printed ware, to include a J &amp; M P. Bell &amp; Co. Triumphal Car patterned comport and cover; a Friburg pattern octagonal shaped ironstone serving dish; a stone china hexagonal shaped serving dish; a willow pattern helmet shaped jug; a small willow pattern tureen and cover; and a blue printed oval bowl.<br/><b>£40-80</b></p> <p>407 A pair of Japanese Imari porcelain tea jars and two covers, late 19th/early 20th century, decorated with rectangular shaped panels enclosing flowers and foliage, 13.5cm high.<br/><b>£30-70</b></p> <p>408 A collection of late 18th/early 19th century English porcelain teawares, to include a Flight Period Worcester fluted teapot; Derby coffee can and saucer; Derby teacups and saucers, etc.<br/><b>£50-100</b></p> <p>409 A Japanese Imari porcelain charger, late 19th/early 20th century, of shaped circular form centred with a circular roundel enclosing an urn issuing flowers and foliage within a panelled border of flowers and foliage enclosed by a blue ground panelled border, 40.5cm diameter.<br/><b>£100-200</b></p> <p>410 A collection of 19th century English teaware, to include three tea bowls and saucers; a single tea bowl; two blue printed tea cups and saucers; and a single tea cup and saucer, makers such as New Hall, Coalport, etc.<br/><b>£40-80</b></p> <p>411 A collection of fourteen assorted 19th century English porcelain and pottery dishes; together with a Continental porcelain twin handled oval dish in the Chelsea style, decorated with two birds on a flowering branch.<br/><b>£50-100</b></p> <p>412 A Chinese porcelain famille rose crackle glaze warrior jar converted to a table lamp, late 19th/early 20th century, with later lamp fitting, four character mark to base, overall height including lamp fitting 44cm high.<br/><b>£100-200</b></p> |
|--|---|



## Antique, Fine Art & Interiors Sale, 24th Sep, 2025 - 25th Sep, 2025

- |   |  |
|---|--|
| <p>413 A Samson porcelain jar decorated in the Chinese famille verte style, late 19th/early 20th century, decorated with fenced garden including rock work, peony, chrysanthemum and willow tree, red painted mark to base, 44cm high.<br/><b>£200-400</b></p> <p>414 A collection of five assorted English porcelain teapots and covers, to include New Hall London shaped teapot and cover numbered 1045; New Hall oval waisted teapot and cover number 354; a Chamberlain Worcester oval fluted teapot cover and stand; a New Hall reeded silver shaped teapot numbered 83; and a John Rose Coalport oval prow shaped teapot and cover; together with a Paris porcelain coffee pot.<br/><b>£50-100</b></p> <p>415 A collection of five assorted trinket boxes, four ceramic, one papier-mâché.<br/><b>£40-80</b></p> <p>416 A Chinese porcelain blue and white octagonal shaped dish, Qing dynasty, decorated with pavilions, trees and figures on a bridge in a river landscape within a diaper border of flowers and Greek key motifs, 38.5cm x 28.5cm.<br/><b>£70-150</b></p> <p>417 A group of four assorted Japanese Imari porcelain dishes, late 19th/early 20th century, the largest 31.5cm diameter, the smallest 21cm diameter.<br/><b>£100-200</b></p> <p>418 An early 20th century clear and frosted blue glass two part figural comport, 23.5cm high.<br/><b>£20-50</b></p> <p>419 A Chinese porcelain Wucan jar and cover, decorated with seven ladies in a fenced garden with palm tree, other trees and rock work, 35cm high.<br/><b>£300-500</b></p> <p>420 Four 19th century English ceramic cream jugs, to include Spode jug with black printed floral detail, pattern number 500; Spode jug with rose garland detail; two other English jugs; and a Herend fruit and flower decorated jug, (5).<br/><b>£30-70</b></p> <p>421 A Chinese porcelain famille rose 'tobacco leaf' tureen cover and stand, Qing dynasty, the stand 38cm wide, the tureen 36cm wide x 23.5cm high.<br/><b>£600-900</b></p> | <p>422 A Royal Doulton figure 'Janet HN1587'; together with a Continental porcelain figure of a 19th century male figure holding a basket of flowers and a game bird, 19cm high; and an English pottery shredded clay bud vase, fronted with a sheep and lamb, 13cm high.<br/><b>£20-50</b></p> <p>423 Five assorted Japanese porcelain beaker cups and corresponding bowls.<br/><b>£30-70</b></p> <p>424 A Sevres porcelain pink ground circular plaque depicting Louis XVI and Court, with richly gilded details, blue painted interlinked L's mark, 49cm diameter.<br/><b>£600-900</b></p> <p>425 A collection of six assorted paperweights.<br/><b>£40-80</b></p> <p>426 A Chinese white ground cloisonne vase, 32.5cm high; together with a Chinese black ground cloisonne circular shaped dragon box and cover, 12cm diameter x 7cm high.<br/><b>£30-70</b></p> <p>427 A boxed Caithness Glass double magnum '93 oversized paperweight, designed by Margot Thomson, made by Frank Toffolo, number 42 of 150 with certificate; together with a Caithness Glass dolphin decorated clear and blue glass bowl, 18.5cm diameter x 12.5cm high.<br/><b>£40-80</b></p> <p>428 Kosta Boda, a limited edition clear and frosted coloured glass cup and saucer sculpture, 13cm high x 19.5cm wide.<br/><b>£40-80</b></p> <p>429 A Tyrie studio pottery rectangular shaped dish decorated in coloured slips with a fishing boat and verse, 50cm x 27cm.<br/><b>£30-70</b></p> <p>430 Scott Irvine, a slate, glass and wood sculpture, the revolving glass centre mounted within a wooden surround on a slate plinth, 55.5cm high x 48cm wide.<br/><b>£50-100</b></p> <p>431 Five bottles of Scottish whisky, to include boxed Talisker single malt 10 year old; boxed Antiquary blended Scotch whisky 12 year old; two boxed Ballantine's blended whiskies; and a Bell's 90th birthday of Her Majesty Queen Elizabeth the Queen Mother decanter and contents.<br/><b>£40-80</b></p> |
|---|--|





## Antique, Fine Art & Interiors Sale, 24th Sep, 2025 - 25th Sep, 2025

- 432 A pair of oak barley twist candlesticks, 31cm high.  
**£20-50**
- 433 A boxed Caithness Glass Mayflower goblet by Colin Terris, limited edition number 12, in original box, 14.5cm high, with certificate; together with a boxed Caithness Glass set of six clear glass wine goblets with wheel cut floral decoration, 14.5cm high.  
**£30-70**
- 434 An early 20th century electroplated three piece tea set; together with an early 20th century four piece electroplated tea set.  
**£30-70**
- 435 A Derby porcelain figure of Jupiter and attendant eagle, 44cm high.  
**£100-200**
- 436 A collection of Waterford glassware comprising eleven wine glasses, 12cm high; and six sherry glasses, etched marks, 11.5cm high.  
**£40-80**
- 437 A Japanese porcelain charger, late 19th/early 20th century, decorated with central roundel enclosing bamboo, pine and blossom branches within a red ground panelled border, decorated with panels of long-tailed birds divided by panels of stylised flowers and foliage, 46cm diameter.  
**£100-200**
- 438 A vintage boxed bottle of Courvoisier Cognac V.S.O.P.  
**£20-50**
- 439 A Wedgwood blue ground Jasperware chamber candlestick; together with a Continental porcelain figural candlestick modelled with girl holding a bird in her left hand, 25.5cm high; Staffordshire bocage figure of a horn player, 16cm high; Staffordshire bocage figure of girl and dog, 12cm high; and a small porcelain figure of girl and sheep, 8cm high.  
**£20-50**
- 440 A large Japanese Imari porcelain charger, late 19th/early 20th century, decorated with central roundel enclosing bamboo, pine and blossom branches within an alternating red and blue ground panelled border, 47cm diameter.  
**£100-200**
- 441 A late 19th century French gilt metal and porcelain mounted clock garniture, the clock with circular porcelain dial baring Roman numerals with twin train movement striking on a coiled gong, the backplate of the movement inscribed 'Japy Freres', within architectural case on gilt wood plinth contained under a glass dome; together with a pair of corresponding urns and glass domes ensuite; the clock, 31cm high x 19.5cm wide, the urns, 23cm high.  
**£250-500**
- 442 A solitaire board set with mottled blue glass marbles, 30cm diameter.  
**£20-50**
- 443 A white and grey marble bowl containing a collection of mainly hardstone polished eggs.  
**£40-80**
- 444 A Chinese porcelain turquoise ground famille rose plate, 20th century; together with a small Chinese famille rose style porcelain bowl; a small gilt metal mounted famille rose circular trinket box; and two cloisonne eggs on stands.  
**£30-70**
- 445 A collection of assorted glassware and EP mounted trinket boxes, toilet bottles, etc., to include an art deco clear glass decanter with orange coloured stopper, 30cm high; clear glass model of a cockerel; ruby glass filled rim bowl; a double ended clear glass scent bottle; six assorted toilet bottles; and seven assorted trinket boxes.  
**£40-80**
- 446 A collection of ten assorted decorative cockerels, comprising three ceramic and seven carved and painted wood.  
**£40-80**
- 447 Assorted paraffin burning oil lamps.  
**£30-70**
- 448 A Paisley shawl worked in coloured threads of typical scroll pattern, 310cm x 165cm.  
**£50-100**
- 449 A 19th century mahogany sarcophagus shaped work box, the hinged cover opening to fitted interior with lift-out tray, the pink paper lined interior inscribed in ink and dated 1846, 28.5cm wide x 17cm high.  
**£30-70**
- 450 A decorative terracotta pottery jar and cover with incised repeating flower pattern, 45cm high.  
**£40-80**



## Antique, Fine Art & Interiors Sale, 24th Sep, 2025 - 25th Sep, 2025

- |  |  |
|--|--|
| <p>451 A pair of large blue glass ocean bottle lanterns, 55cm high.<br/><b>£30-70</b></p> <p>452 A collection of EP ware to include twin-handled serving tray, case set of flatware, trophies, knife rests and a portable spirit burner in leather case.<br/><b>£20-50</b></p> <p>453 Two hardstone trees; a rose quartz figure of Buddha; assorted carved stone animals and quartz specimens, etc.<br/><b>£30-70</b></p> <p>454 A 19th century mahogany writing slope with green baize lined interior, 46cm wide.<br/><b>£30-70</b></p> <p>455 A late 19th/early 20th century red glazed terracotta urn on socle plinth, the urn with horned mask terminals and part gadrooned body, 71cm high.<br/><b>£150-300</b></p> <p>456 Two volumes by Gordon Anthony, Ballet Camera Studies and Russian Ballet Camera Studies, both Geoffrey Bles.<br/><b>£20-50</b></p> <p>457 A Border Fine Art model of a bull on mahogany plinth; together with three Coalport house groups titled 'The Villa', 'Elizabethan Cottage', and 'Red House'; together with a late 19th century pastille burner in the form of a roundhouse.<br/><b>£30-70</b></p> <p>458 A teddy bear fashioned as a pilot; together with an owl teddy bear fashioned as a pilot.<br/><b>£20-50</b></p> <p>459 A late 19th/early 20th century Indian brass mounted double horn two light candelabra, 50cm wide x 27cm high.<br/><b>£40-80</b></p> <p>460 A Chinese darkwood and wire inlaid double figure gong frame, 38cm high x 23cm wide; together with two Chinese darkwood circular stands, 14cm diameter and 12cm diameter.<br/><b>£40-80</b></p> <p>461 Three assorted shells.<br/><b>£30-70</b></p> <p>462 J.H. Animations, an electric autometer figure dressed in Uncle Sam type outfit, 95cm high.<br/><b>£70-150</b></p> | <p>463 A vintage red leather travelling vanity case monogrammed in gilt D.D., the interior with assorted silver mounted toilet bottles and brushes, incomplete, contained in original canvas outer sleeve bearing initials D.D., 46cm wide.<br/><b>£50-100</b></p> <p>464 A pair of limed wood candle stands with foliate carved collars, 54.5cm high.<br/><b>£20-50</b></p> <p>465 Two taxidermy male and female capercaillie, both mounted on naturalistic, rocky rectangular shaped plinths, 75cm wide.<br/><b>£50-100</b></p> <p>466 A late 19th/early 20th century walnut cased horn handled five piece carving set.<br/><b>£20-50</b></p> <p>467 A 19th century mahogany and boxwood lined tea caddy, the hinged cover opening to a three division interior, 26cm wide.<br/><b>£30-70</b></p> <p>468 Three boxes containing assorted cutlery and flatware.<br/><b>£20-50</b></p> <p>469 An antique Persian Shamshir white metal mounted sword and scabbard, the sword with curved single edged blade, the white metal mounted scabbard sword length, 94cm long.<br/><b>£100-200</b></p> <p>470 A gilt metal three light table lamp, the scroll branches with foliate cast sconces, with applied coloured porcelain flower details, with adjustable shade, overall 69cm high.<br/><b>£100-200</b></p> <p>471 A collection of assorted copper and brassware, to include Chinese gilt metal figure of Buddha, 22cm high; and a Chinese brass figural candlestick modelled with Manchurian crane standing on terrapin, 35cm high, etc.<br/><b>£40-80</b></p> <p>472 A vintage country house indicator board by James Scott &amp; Co. 6-8 Princes Street Perth, in later white painted frame, 43.5cm high x 68cm wide.<br/><b>£50-100</b></p> <p>473 A pair of three light electroplated candelabra, 50cm high x 47cm wide.<br/><b>£40-80</b></p> <p>474 A country house wall mounted barometer, approximately 35cm diameter.<br/><b>£20-50</b></p> |
|--|--|



## Antique, Fine Art & Interiors Sale, 24th Sep, 2025 - 25th Sep, 2025

- |     |  |     |  |
|-----|--|-----|--|
| 475 | A vintage British canvas and leather artillery shell carrier decorated with Royal crests, 34cm high.<br><b>£30-70</b>  | 485 | A 20th century Chinese porcelain dragon and phoenix vase on hardwood stand, the vase with six character mark, overall 48cm high.<br><b>£40-80</b>  |
| 476 | A 19th century blue printed octagonal shaped ashet, willow pattern, 49.5cm x 40cm.<br><b>£20-50</b>  | 486 | A pair of 20th century Chinese porcelain famille rose vases decorated with various figures, both standing on carved wood stands, 66cm high.<br><b>£50-100</b>  |
| 477 | An Edinburgh silver mounted Sgian Dubh; together with a Scottish black leather sporran and a kilt belt.<br><b>£50-100</b>  | 487 | A pair of Scottish pottery lions, with tan coloured fur, gilded details and inlaid glass eyes, 24.5cm high x 33cm wide.<br><b>£30-70</b>   |
| 478 | A Royal Worcester ivory ground twin-handled potpourri jar and two covers, decorated with scattered foliate sprays, the details picked out in gilt, puce printed marks number 1256, 29.5cm high.<br><b>£100-200</b>   | 488 | A group of five assorted Beswick sheep figures.<br><b>£40-80</b>   |
| 479 | A collection of Chinese objects to include a cased drawing set with terrapin form ink stone; four assorted porcelain snuff bottles; two inside painted glass snuff bottles; and a hardstone tree.<br><b>£40-80</b>   | 489 | Two pairs of Beswick King Charles spaniels, 14cm high and 8.5cm high.<br><b>£40-80</b>   |
| 480 | A 20th century Chinese set of twenty three assorted carved and polished hardstone miniature musical instruments on hardwood stands, all in a fitted case.<br><b>£70-150</b>  | 490 | A Beswick figure of Red Rum; together with another Mill Reef.<br><b>£40-80</b>   |
| 481 | A Royal Worcester gilt metal mounted ivory ground bowl decorated with scattered foliate sprays, 23cm diameter x 12cm high.<br><b>£20-50</b>  | 491 | Two Beswick horse figures, one matt black Black Beauty figure, the other similar.<br><b>£40-80</b>   |
| 482 | A decorative Chinese blue and white porcelain dragon jar and cover, 30cm high; together with a decorative Chinese porcelain jar and cover decorated with peony and other flowers, 28cm high.<br><b>£40-80</b>  | 492 | A collection of eight assorted Beswick dog figures, to include a Beswick panda and a Beswick rabbit.<br><b>£50-100</b>   |
| 483 | A Chinese porcelain famille verte turquoise ground fish bowl, Qing dynasty, the exterior decorated with two shaped rectangular panels enclosing court figures and warriors, divided by two smaller rectangular shaped panels enclosing scholars and warriors, on a turquoise ground with lotus scroll enclosed within yellow and green ground diaper borders, the interior decorated with five Shubunkin fish and foliage, 40cm diameter x 36cm high.<br><b>£500-800</b> | 493 | A collection of eight assorted Beswick cattle figure groups to include Friesian bull connoisseur model, Friesian cow and calf, C. H. Coddington Hilt Bar C. H. Whitehill Mandate, etc.<br><b>£50-100</b>                                     |
| 484 | A Seiko quartz mantle clock in domed case; together with two other mantle clocks.<br><b>£20-50</b>   | 494 | After Guillaume Cousto, a pair of bronze Marly Horse figure groups, 57cm high x 60cm wide.<br><b>£300-500</b>  |
|     |  | 495 | An early 20th century brass planter/jardiniere stand, the sides with pierced detail line masked terminals and ring handles raised on three paw feet, 27cm diameter x 26cm high.<br><b>£30-70</b>   |
|     |  | 496 | A Chinese darkwood circular vase stand, overall diameter 23cm, inner diameter 20cm; together with another smaller carved and pierced wood stand, 11cm diameter; and a pierced and carved wood lid for a jar, 17cm diameter.<br><b>£20-50</b> |
|     |  | 497 | A pair of carved oak figures, William Wallace and Robert the Bruce, 56cm high.<br><b>£50-100</b>   |



## Antique, Fine Art & Interiors Sale, 24th Sep, 2025 - 25th Sep, 2025

- |  |  |
|--|--|
| <p>498 A Chinese carved green stone figure of a Shishi on carved and pierced wooden stand, in a fitted box, overall 11cm high x 17cm wide.<br/><b>£50-100</b></p> <p>499 Four assorted Nao figures, to include two girls holding fans; a young boy; and a boy and girl seated on a rocky outcrop.<br/><b>£40-80</b></p> <p>500 A bronzed figure of a stag, the base inscribed 'Falkirk', 37cm high x 37cm wide.<br/><b>£40-80</b></p> <p>501 A three piece EPNS tea set; together with a cased pair of EP salts and a cased three piece EP cruet set.<br/><b>£30-70</b></p> <p>502 A small Japanese darkwood stand, the circular top above a frieze carved in shallow relief with stylised flowers, raised on four cabriole supports, 25cm diameter x 30cm high.<br/><b>£20-50</b></p> <p>503 A Chinese porcelain figure of Buddha and five boys, 20cm high; together with a Japanese Kutani porcelain saucer dish, 10.5cm diameter.<br/><b>£20-50</b></p> <p>504 A pair of reproduction Staffordshire Pottery cat figures seated on cobalt blue cushions with gilt lined detail, 17cm high.<br/><b>£20-50</b></p> <p>505 A collection of assorted Royal Crown Derby Imari pattern wares, to include a small jar and cover, 15.5cm high; three breakfast cups, saucers and side plates; and a part tea set.<br/><b>£100-200</b></p> <p>506 A collection of thirteen assorted ceramic animal figures, to include highland cattle, sheep, panda, bears, dogs, etc.<br/><b>£40-80</b></p> <p>507 Four assorted Border Fine Arts figure groups, to include Stout Heart number JH34, Bluetit and Coins B0122, Golden Eagle RB40, and Wildlife Families Otters RW30.<br/><b>£40-80</b></p> <p>508 A collection of assorted bird ornaments, to include Royal Copenhagen double bird group; Royal Copenhagen saucer decorated with a robin; Goebel bird; two Royal Crown Derby birds; and a pair of cloisonne enamel cranes on carved wooden stand.<br/><b>£50-100</b></p> | <p>509 Rish Gordon, a collection of six hand painted stones decorated with animals and six agate/stone slices painted with animals.<br/><b>£40-80</b></p> <p>510 * A box of assorted vintage touring maps.<br/><b>£20-50</b></p> <p>511 No Lot.<br/><b>£1-2</b></p> <p>512 No Lot.<br/><b>£1-2</b></p> <p>513 No Lot.<br/><b>£1-2</b></p> <p>514 No Lot.<br/><b>£1-2</b></p> <p>515 No Lot.<br/><b>£1-2</b></p> <p>516 No Lot.<br/><b>£1-2</b></p> <p>517 No Lot.<br/><b>£1-2</b></p> <p>518 No Lot.<br/><b>£1-2</b></p> <p>519 No Lot.<br/><b>£1-2</b></p> <p>520 No Lot.<br/><b>£1-2</b></p> <p>521 A box of assorted lighting.<br/><b>£20-50</b></p> <p>522 A box of assorted glassware.<br/><b>£10-20</b></p> <p>523 Two boxes of assorted ceramics and glassware to include a pair of leather and brass bellows, ornamental costume jewellery, etc.<br/><b>£10-20</b></p> <p>524 A box of assorted EP ware.<br/><b>£20-50</b></p> <p>525 An oversized Japanese fan, 88cm long; together with a collection of assorted wooden ware.<br/><b>£20-50</b></p> <p>526 A box of assorted Dinky toy models to include Thunderbirds II; USS Enterprise; Ford Capri police car; various other model cars, airplanes, etc.<br/><b>£20-50</b></p> <p>527 Two boxes of assorted EP ware.<br/><b>£40-80</b></p> |
|--|--|



## Antique, Fine Art & Interiors Sale, 24th Sep, 2025 - 25th Sep, 2025

528	A box of assorted vintage camera equipment to include Jenaflex Electronic AM1 SLR camera; Canon EOS 1000F SLR camera; a Praktica BX20 camera body; another Canon EOS 1000F SLR camera; a 28-200mm macro lens; Carl Zeiss Jena; and other remaining accessories, lenses, etc. <b>£40-80</b>	543	No Lot. <b>£1-2</b>
529	A box of assorted items to include two Isle of Man first day covers; a collection of Ships of The Royal Navy beer mats; assorted coins; medallions; opera glasses; etc. <b>£20-50</b>	544	No Lot. <b>£1-2</b>
530	Four gilt metal two-light wall sconces; a pair of pewter candlesticks; a brass pen tray in the form of an Egyptian holding a pyramid; etc. <b>£20-50</b>	545	No Lot. <b>£1-2</b>
531	A box of 19th century teaware to include a Copeland & Garrett blue and gilt part teaset; together with another grey and gilt part teaset, pattern no.849; together with a box of 20th century teawares to include Paragon Mayflower part teaset, assorted Royal Albert Old Country Rose teaware and a Paragon green ground Art Deco style part teaset. <b>£40-80</b>	546	No Lot. <b>£1-2</b>
532	A box of assorted EP ware. <b>£20-50</b>	547	No Lot. <b>£1-2</b>
533	A box of assorted miscellaneous ceramics. <b>£10-20</b>	548	No Lot. <b>£1-2</b>
534	A box of assorted brassware to include horse door stop; decorative stag; a pair of hind and doe figures; and two prancing horses. <b>£40-80</b>	549	No Lot. <b>£1-2</b>
535	A box of boxed model steamer ships; cruise liners; Naval battleships. <b>£40-80</b>	550	Three assorted split cane fishing rods and a gaff by Hardy Bros, Alnwick London. <b>£40-80</b>
536	No Lot. <b>£1-2</b>	551	An African Takouba sword with leather scabbard, mid 20th century or possibly earlier, 96cm long. <b>£50-100</b>
537	No Lot. <b>£1-2</b>	552	A replica William Wallace style Scottish broadsword, 105cm long. <b>£50-100</b>
538	No Lot. <b>£1-2</b>	553	A Chinese brass mounted double short sword in tortoise shell scabbard, the scabbard concealing two identical swords, overall length 63cm. <b>£50-100</b>
539	No Lot. <b>£1-2</b>	554	A late 19th/ early 20th century Naval Officers sword by H. Shannon, 21 Fore St. Devonport, with etched blade and sharks skin grip, lacking scabbard, overall 90.5cm long. <b>£50-100</b>
540	No Lot. <b>£1-2</b>	555	A George VI Naval Officers sword and scabbard by Gieves, the hinged guard section inscribed 'R. G. Cook, 1935', with black leather belt. <b>£150-300</b>
541	No Lot. <b>£1-2</b>	556	A George V Royal Army Service Corps Officers sword in leather scabbard, complete with outer sleeve. <b>£70-150</b>
542	No Lot. <b>£1-2</b>	557	An early to mid 20th century African Sudanese Kaskara sword and leather part scabbard, 105cm long, together with a fencing foil. <b>£40-80</b>
		558	A London silver mounted ebonised walking cane, 91cm long. <b>£30-70</b>



## Antique, Fine Art & Interiors Sale, 24th Sep, 2025 - 25th Sep, 2025

- |   |  |
|---|--|
| <p>559 A vintage white metal mounted RAF swagger stick, 70cm long; together with another white metal mounted RAF swagger stick, 70.5cm long.<br/><b>£30-70</b></p> <p>560 A silver mounted long rose briar stick, with leather handle and collar, inscribed '1899', 120cm long; together with a white metal mounted swagger stick, 68cm long.<br/><b>£40-80</b></p> <p>561 Two late 19th century Chinese silver mounted horn swagger sticks, both of tapered cylindrical form, the silver mounts embossed with figures and pine trees, 83.5cm long and 77.5cm long.<br/><b>£70-150</b></p> <p>562 An antique silver mounted darkwood walking cane, the handle carved in the form of a stylised crown above a yellow metal engine turned collar and London hallmarked silver collar, the tapered cylindrical stick with hatched and spiral carved detail, 92cm long.<br/><b>£30-70</b></p> <p>563 An antique Malacca walking cane with 18ct gold plated mount, 86.5cm long.<br/><b>£30-70</b></p> <p>564 An unusual Edwardian silver mounted whip, with novelty silver handle formed as a bulldogs head with glass eyes, hallmarked London 1908, inscribed '24 Addison Road, Bedford Park', overall 73cm long.<br/><b>£40-80</b></p> <p>565 An antique yellow metal mounted Malacca cane, 94cm long.<br/><b>£50-100</b></p> <p>566 Two antique silver mounted horn handled ebonised walking canes, 91cm long and 86cm long.<br/><b>£30-70</b></p> <p>567 Four assorted walking canes, to include a white metal mounted 18th century walking cane, inscribed on collar 'William and George Scott, 1757', the top with red stone insert, 103cm long; an 18th/19th century long cane with silver top, engraved with initials 'J.B', 103cm long; a white metal mounted long cane, the top inscribed 'W. Brown', 110cm long; and a shorter horn handled faux bamboo cane, 90cm long.<br/><b>£50-100</b></p> | <p>568 A group of four assorted antique walking canes, to include copper mounted faux bamboo cane with screw top concealing a miniature glass, 89cm long; and three others.<br/><b>£50-100</b></p> <p>569 An antique 9ct gold mounted darkwood walking cane, 92cm long.<br/><b>£70-150</b></p> <p>570 An antique shark vertebrae walking cane with horn handle, 82.5cm long.<br/><b>£40-80</b></p> <p>571 Two late 19th century whips, with cast silver plated mounts, one formed as a greyhounds head, 54cm long; the other as a spaniels head, 66cm long (2).<br/><b>£40-80</b></p> <p>571A A group of four assorted white metal mounted military swagger sticks, the longest 78cm.<br/><b>£50-100</b></p> <p>572 Clarence Roe (1850-1909)<br/>A highland loch<br/>oil on canvas, signed lower left<br/>59.5cm x 89.5cm, framed 84cm x 114cm<br/><b>£250-500</b></p> <p>573 <b>ARR</b> Brian Rawling (B. 1931)<br/>Stag and hinds, Sutherland<br/>watercolour, signed and dated '96 lower right<br/>50cm x 68cm, framed and glazed 74cm x 90.5cm<br/><b>£100-200</b></p> <p>574 <b>ARR</b> Iain Ross (20th century)<br/>Stag and hinds in a misty island landscape<br/>charcoal and pastel, signed lower right and dated '86<br/>38.5cm x 57.5cm, framed and glazed 64cm x 84cm<br/><b>£70-150</b></p> <p>574A <b>ARR</b> Rish Gordon<br/>Three rabbits<br/>watercolour, signed and dated '78<br/>32.5cm x 42.5cm, framed and glazed 52.5cm x 62.5cm<br/>together with another rabbit study by the same hand, signed and dated 1978, framed and glazed, overall 30.5cm x 40.5cm; and another by the same hand, deer in shallows, signed and dated 1980, framed and glazed, overall 28cm x 24.5cm.<br/><b>£50-100</b></p> |
|---|--|



## Antique, Fine Art & Interiors Sale, 24th Sep, 2025 - 25th Sep, 2025

- |  |  |
|--|--|
| <p>575 Douglas Cameron (19th century)<br/>In the highlands<br/>oil on canvas, signed lower left inscribed on the gilt slip<br/>100cm x 75cm, framed and glazed 133cm x 107cm<br/><b>£400-600</b></p> <p>576 Attributed to Philip Reinagle RA (1749-1833)<br/>Two Greyhounds and Hare<br/>pencil<br/>23.5cm x 33cm, framed and glazed 35cm x 44cm<br/><b>£100-200</b></p> <p>577 Oliver Clare (1853-1927)<br/>Still life with fruit<br/>oil on canvas, signed and dated 94 lower left, inscribed on paper label verso 'David Messum'<br/>26.5cm x 21.5cm, framed 38cm x 32cm<br/><b>£200-300</b></p> <p>578 <b>ARR</b> Valerie Fraser RSW (b.1933)<br/>Pink Evening<br/>oil on board, signed lower right, inscribed verso<br/>23.5cm square, framed and glazed 42cm square<br/><b>£70-150</b></p> <p>579 Early 20th century Scottish School<br/>Moonlight seascape with fishing boats<br/>oil on canvas<br/>27cm x 32cm, framed 40cm x 45cm<br/><b>£40-80</b></p> <p>580 <b>ARR</b> J. D. Henderson<br/>Orange and yellow flowers and fruit<br/>oil on board, signed and dated '93 lower right, inscribed verso<br/>29cm x 23.5cm, framed and glazed 43cm x 37.5cm<br/><b>£50-100</b></p> <p>581 Mabel Royds (1874-1941)<br/>Marjorie<br/>charcoal, inscribed, signed and dated 1918 along the lower margin<br/>16cm x 15cm, framed and glazed 42cm x 39cm together with another by the same hand, Marjorie, study of a child's head, charcoal, 7.5cm x 12.5cm, framed and glazed 33cm x 37cm<br/><b>£50-100</b></p> <p>582 J. C. Gray (late 19th/ early 20th century)<br/>Harvest Time, a field with two horses, carts, haystacks and farmworkers<br/>oil on canvas, signed lower left<br/>40cm x 55cm, framed 56cm x 70cm<br/><b>£100-200</b></p> | <p>583 Late 19th century English School<br/>A pair of portraits, George Lucas Ruxton and Emily Alice Ruxton<br/>oils on canvas, inscribed on labels verso<br/>40cm x 30cm, framed 56cm x 46cm<br/><b>£500-800</b></p> <p>584 <b>ARR</b> Noel Slaney RSW (1915-2000)<br/>Green Parrot<br/>charcoal and pastel, signed lower right<br/>34cm x 27.5cm, framed and glazed 55.5cm x 48cm<br/><b>£50-100</b></p> <p>585 <b>ARR</b> Hugh Bryning (fl.1973-1985)<br/>Summer landscape with cattle grazing in a field signed and dated lower right<br/>24.5cm x 35.5cm, framed and glazed 43cm x 53cm<br/><b>£40-80</b></p> <p>586 E. S. Bisset (20th century)<br/>Blue Tits and Chicks on a flowering branch<br/>watercolour, signed lower left<br/>19cm x 26.5cm, framed and glazed 46cm x 54 together with Timothy, Dancers, watercolour, signed and dated '04 lower left, 22cm x 29.5cm, framed and glazed 41cm x 47cm; and Margaret Hall, Still Life of flowers in a glass vase, oil on board, signed lower left, 70cm x 37cm, framed and glazed 87cm x 53cm (3)<br/><b>£70-150</b></p> <p>587 E. H. Niemann (19th century)<br/>Summer Evening with a distant landscape, river and bridge running through a town in the foreground<br/>oil on canvas, signed lower right<br/>23.5cm x 34cm, framed 36cm x 46cm<br/><b>£200-300</b></p> <p>588 J. C. Gray (late 19th/ early 20th century)<br/>Casting Off<br/>oil on canvas, signed lower right<br/>24.5cm x 34.5cm, framed 42cm x 52cm<br/><b>£100-200</b></p> <p>589 Horatio R. Hollingdale (1854-1934)<br/>Farmyard scene after the harvest, with haystacks, farmer, horses, cart and geese<br/>watercolour, signed and dated 1894 lower right<br/>34.5cm x 51cm, framed and glazed 56.5cm x 73cm<br/><b>£50-100</b></p> |
|--|--|



## Antique, Fine Art & Interiors Sale, 24th Sep, 2025 - 25th Sep, 2025

- |  |   |
|--|---|
| <p>590 Diana Weston<br/>'Oh Mary!', study of a Green Parrot<br/>watercolour, signed and inscribed<br/>19cm x 14cm, framed and glazed 44cm x 38.5cm<br/><b>£50-100</b></p> <p>591 <b>ARR</b> James McIntosh Patrick RSA ROI ARE LLD (1907-1998)<br/>Winter Evening from My Studio, the River Tay Railway Bridge from Magdalen Green<br/>watercolour, signed lower left, inscribed verso<br/>73cm x 54cm, framed and glazed 99cm x 79cm<br/><b>£800-1,200</b></p> <p>592 <b>ARR</b> J. S. (20th century)<br/>Still life with yellow, red, pink and white flowers in a green vase<br/>oil on canvas, signed with initials lower left and dated '53<br/>59cm x 44cm, framed 78cm x 63cm<br/><b>£100-200</b></p> <p>593 19th century English School<br/>Marshland scene with buildings and figure in a shallow bottom boat<br/>oil on canvas, indistinctly inscribed lower right<br/>39cm x 60cm, framed 71.5cm x 92cm<br/><b>£100-200</b></p> <p>594 Wilfred Alfred Gibson (1866-1931)<br/>Landscape with three figures harvesting in the fields, a windmill beyond<br/>watercolour, signed lower left<br/>13.5cm x 21cm, framed and glazed 46cm x 62cm<br/><b>£70-150</b></p> <p>595 George Smith RSA (1870-1934)<br/>Feeding cattle in the barn<br/>oil on canvas, signed lower right<br/>39cm x 49cm, framed and glazed 65cm x 75cm<br/><b>£600-900</b></p> <p>596 Koho Shoda (1871-1946)<br/>A river in the rain<br/>woodblock print, signed in the print lower left<br/>22cm x 34.5cm, framed and glazed 38cm x 50cm<br/><b>£80-120</b></p> <p>597 Late 19th/ early 20th century British School<br/>River landscape with watermill and other buildings<br/>watercolour<br/>21.5cm x 37cm, framed and glazed 31cm x 46cm<br/><b>£40-80</b></p> | <p>598 Alexander Hay (19th century)<br/>Highland landscape with loch, ruined castle, thatched cottages and figures<br/>watercolour, signed and dated 1879 lower right<br/>36cm x 48.5cm, framed and glazed 50cm x 61.5cm<br/><b>£50-100</b></p> <p>599 F.C.B. (early 20th century British School)<br/>Paradise place<br/>graphite and watercolour, signed with initials and dated 19-05-05 lower left<br/>20cm x 25cm, framed and glazed 37.5cm x 39cm<br/>together with another by the same hand, Holborn Cross, watercolour signed with initials and dated 19-05-03, 22.5cm x 22cm, framed and glazed 37.5cm x 36.5cm<br/><b>£100-200</b></p> <p>600 East Part of Fife-Sh., a coloured map, published by John Thomson, Edinburgh 1827, framed and glazed 68.5cm x 56cm.<br/><b>£30-70</b></p> <p>601 <b>ARR</b> Vernon Thomas (1894-1962)<br/>Swing High<br/>coloured etching, signed lower right<br/>27.5cm x 20.5cm, framed and glazed 52cm x 37cm<br/><b>£40-80</b></p> <p>602 <b>ARR</b> Alan Davie (Scottish, 1920-2014)<br/>Untitled<br/>Mixed media, signed and dated Aug 2010 lower right<br/>21.5cm x 15cm, framed and glazed 37.5cm x 31cm<br/><b>£100-200</b></p> <p>603 <b>ARR</b> Alan Davie (Scottish, 1920-2014)<br/>Untitled<br/>mixed media, signed and dated Aug 2010 lower right<br/>14.5cm x 14cm, framed and glazed 31cm x 30cm<br/><b>£100-200</b></p> <p>604 <b>ARR</b> Alan Davie (Scottish, 1920-2014)<br/>Untitled<br/>mixed media, inscribed and dated 2011 lower right<br/>16.5cm x 14cm, framed and glazed 34.5cm x 31.5cm<br/><b>£100-200</b></p> |
|--|---|





## Antique, Fine Art & Interiors Sale, 24th Sep, 2025 - 25th Sep, 2025

- 605 **ARR M. Jessiman (20th century)**  
Still life with fruit in a blue bowl  
oil on canvas board, signed lower right  
39cm x 49cm, framed and glazed 59cm x 69cm  
**£100-200**
- 606 Late 19th/ early 20th century Scottish School  
Highland landscape with loch and rowing boats  
on shore  
watercolour, indistinctly signed lower left  
32cm x 49.5cm, framed and glazed 59.5cm x  
75.5cm  
**£40-80**
- 607 19th century Neapolitan School, Eruzione  
The Bay of Naples with Mount Vesuvius erupting  
at night  
gouache, inscribed on the lower margin 'Eruzioni  
Del, 1855'  
framed and glazed 52cm x 72cm  
together with a companion, The Bay of Naples  
with Mount Vesuvius smoking in daylight,  
gouache, inscribed 'Eruzioni Del, 1855', framed  
and glazed 52cm x 72cm  
**£300-500**
- 608 **ARR Ada Hill Walker (1879-1955)**  
Blue and Gold, still life  
watercolour, signed lower right, inscribed on  
label verso  
35cm x 44cm  
**£50-100**
- 609 **ARR Colin Gibson (Irish, b.1948)**  
The Liffey, Dublin  
oil on board, signed and inscribed lower right  
24cm x 34cm, framed and glazed 43cm x 53cm  
**£200-300**
- 610 William Henry Hunt (1790-1864)  
The bird's nest  
watercolour signed lower left  
15cm x 22.5cm, framed and glazed 40cm x  
48cm  
**£200-300**
- 611 Late 19th/ early 20th century Japanese School  
Cockerel and Hen  
watercolour on paper, signed lower right  
framed and glazed 26cm square  
together with another similar, framed and glazed  
36cm x 20cm (2)  
**£40-80**
- 612 **ARR Hamish B. Lawrie (1919-1987)**  
Landscape  
watercolour, signed lower left  
16.5cm x 21.5cm, framed and glazed 32cm x  
37.5cm  
together with another by the same hand, 10.5cm  
x 15cm, framed and glazed 25cm x 30cm (2)  
**£50-100**
- 613 Augustus Osborne Lamplough (1877-1930)  
Felluca on the River Nile  
watercolour, signed lower left  
22cm x 59cm, framed and glazed 37cm x  
74.5cm  
**£250-400**
- 613A Augustus Osborne Lamplough (1877-1930)  
Desert Scene with figures viewing a distant  
settlement, the sun setting on the mountains  
beyond  
watercolour, signed lower left  
21.5cm x 59cm, framed and glazed 37cm x  
74.5cm  
**£250-400**
- 614 18th century British School, manner of Jeremiah  
Davidson  
Half-length portrait of a young man  
oil on canvas  
90cm x 69.5cm, framed 113cm x 92cm  
**£300-500**
- 615 19th century Chinese School, two watercolours  
on pith paper, both depicting colourful long-  
tailed birds, both framed and glazed 30cm x  
40cm.  
**£40-80**
- 616 John Hamilton Glass SSA (fl.1890-1925)  
River Garry  
watercolour, signed lower left  
34cm x 49cm, framed and glazed 57cm x 74cm  
**£50-100**
- 617 An antique tapestry picture of an 18th century  
lady and attendant, worked in brown, ochre and  
blue coloured threads, double sided, in giltwood  
frame, 92cm x 77cm.  
**£300-500**
- 618 A Middle Eastern dagger in a framed and glazed  
display case, overall 43cm x 57cm.  
**£20-50**
- 619 **ARR R. Forsyth**  
The Blue Vase, still life  
charcoal and pastel, signed lower left, inscribed  
verso and dated 1991  
45cm x 42.5cm, framed and glazed 65cm x  
61cm  
**£70-150**



## Antique, Fine Art & Interiors Sale, 24th Sep, 2025 - 25th Sep, 2025

- |   |  |
|---|--|
| <p>620 After Barry MacFarlane<br/>Kingfisher<br/>coloured print<br/>framed and glazed 33.5cm x 29cm<br/><b>£20-50</b></p> <p>621 19th century British School<br/>Three Botanical Studies, Convolvulaceae, dated 1869, framed and glazed 48cm x 31.5cm; Ranunculus, dated 1871, framed and glazed 50cm x 33cm; and Bellis, dated 1869, framed and glazed 48cm x 31.5cm.<br/>all watercolours<br/><b>£100-200</b></p> <p>622 <b>ARR</b> Peter Howson OBE (b.1958)<br/>Twist<br/>oil on canvas, signed lower right<br/>32cm x 27cm, framed and glazed 52.5cm x 47.5cm<br/><b>£600-900</b></p> <p>623 Late 19th century European School<br/>The Outdoor Feast, figures seated around a table<br/>watercolour, indistinctly signed lower right<br/>13cm x 16cm, framed and glazed 28cm x 31cm<br/><b>£50-100</b></p> <p>624 19th century Scottish School<br/>Highland loch with sailing boat at anchor, and figures in a rowing boat coming ashore<br/>oil on canvas<br/>44.5cm x 75cm, framed 64cm x 94cm<br/>together with an overpainted and varnished print depicting Iona Cathedral in a giltwood frame, 65cm x 92cm (2)<br/><b>£40-80</b></p> <p>625 Kentsch<br/>Alpine scene with snow capped peaks and chalet in foreground<br/>oil on canvas, signed lower right<br/>48.5cm x 98.5cm, framed 66cm x 116cm<br/><b>£50-100</b></p> <p>626 A pair of late 19th/ early 20th century<br/>needlework embroidered panels depicting pheasants, both framed and glazed 45.5cm x 49cm; together with a needlework picture of an Officer on horseback, framed and glazed 62cm x 65cm; and another oval needlework panel in pierced frame, 58cm x 45cm; and a smaller needlework embroidered picture in ornate giltwood frame, overall 48cm x 37cm (5).<br/><b>£40-80</b></p> | <p>627 <b>ARR</b> Prudence Turner (1930-2007)<br/>A touch of autumn, highland landscape with two stags drinking from a river<br/>oil on canvas, signed lower right<br/>49.5cm x 75cm, framed 64cm x 90cm<br/><b>£70-150</b></p> <p>628 A pair of hunting prints, both framed and glazed 27.5cm x 81cm.<br/><b>£40-80</b></p> <p>629 <b>ARR</b> Prudence Turner (1930-2007)<br/>A Highland lochscene<br/>oil on board, signed lower right<br/>51cm x 102cm, framed 63cm x 114cm<br/><b>£70-150</b></p> <p>630 After Wright Barker<br/>A mountain pool, Isle of Harris<br/>photogravure<br/>framed and glazed 93cm x 113.5cm<br/>and another after Wright Barker, Storm Driven, gravure hanfstaengl, framed and glazed 100cm x 118cm (2)<br/><b>£50-100</b></p> <p>631 Daniel Martin<br/>The Forth Railway Bridge<br/>oil on canvas, signed lower right<br/>29.5cm x 100cm<br/><b>£40-80</b></p> <p>632 A late 19th century later white painted cast iron overmantle, set with three rectangular bevelled mirror plates below a fluted frieze and flower and scroll decorated surmount, 54cm high x 92cm wide.<br/><b>£40-80</b></p> <p>633 A Chinese darkwood urn stand, late 19th century, the shaped square top with a mottled red marble insert above a frieze carved and pierced with fruit and flowers, raised on four shaped supports with claw and ball feet united by concave stretchers, 42cm square x 45.5cm high.<br/><b>£100-200</b></p> <p>634 A 19th century mahogany and ebony lined stage back breakfront sideboard, the upright open back supported by turned spindles, above a central blind frieze drawer with gilt metal Anthemion mount, flanked by two drawers on either side, and two further deep bottle drawers, each with internal fitted divisions, raised on six tapered square supports with reeded detail, 212cm wide x 109cm high x 83cm deep.<br/><b>£100-200</b></p> |
|---|--|



## Antique, Fine Art & Interiors Sale, 24th Sep, 2025 - 25th Sep, 2025

- |  |  |
|--|--|
| <p>635 A pair of mid 20th century African Ashanti carved wood elephant stools, 20.5cm high x 33cm wide.<br/><b>£50-100</b></p> <p>636 Herbert Terry, a vintage angle poise lamp, with cream coloured detail.<br/><b>£40-80</b></p> <p>637 A George III style mahogany secretaire bookcase, the upper section with moulded cornice and dentil frieze above a pair of astragal glazed cupboard doors, opening to a fitted interior with three adjustable shelves, on a base with secretaire drawer and pair of cupboard doors below, raised on bracket feet, 115cm wide x 225cm high x 53.5cm deep.<br/>Ivory Act 2018 (2022) compliant with non-transferable APHA registration, reference 9A2RZG7S.<br/><b>£40-80</b></p> <p>638 A pair of chipboard circular drape tables, 79cm diameter x 73cm high.<br/><b>£20-50</b></p> <p>639 A rounded rectangular wall mirror in woven wicker frame, 148cm high x 77cm wide; together with another similar white painted example.<br/><b>£40-80</b></p> <p>640 A late 19th century French Kingwood, rosewood and gilt metal mounted occasional table, the rectangular top of serpentine outline, inlaid with a foliate spray above a pull-out leather lined slide and single end drawer, raised on cabriole supports with gilt metal sabots, 53cm wide x 72cm high x 34cm deep.<br/><b>£70-150</b></p> <p>641 A George III style satinwood and ebony lined demi lune commode, fitted with a single frieze drawer and single cupboard door, raised on four tapered square supports with spade feet, 91cm wide x 92cm high x 45cm deep.<br/><b>£400-600</b></p> <p>642 A late 19th century Japanese lacquer and inlaid rectangular wall panel, the blue ground lacquer centre inlaid with pheasant perching on a stand surrounded by peony and wisteria, 154.5cm x 58cm.<br/><b>£400-600</b></p> <p>643 A group of three assorted mounted skull and horn trophies.<br/><b>£50-100</b></p> | <p>644 A 20th century Louis XVI style gilt metal mounted chest of seven drawers, raised on short tapered supports with foliate cast sabots, 45cm wide x 99.5cm high x 33cm deep.<br/><b>£70-150</b></p> <p>645 A 19th century mahogany Wellington chest of small size, fitted with seven graduated drawers, all with turned knob handles, 50cm wide x 103.5cm high x 34.5cm deep.<br/><b>£100-200</b></p> <p>646 A late 19th/ early 20th century French gilt metal mounted Louis XVI style tall chest, fitted with seven long drawers, the marble top no longer present, 74cm wide x 131cm high x 35cm deep.<br/><b>£70-150</b></p> <p>647 An Edwardian mahogany and satinwood banded wardrobe, the moulded cornice with dentil frieze over a pair of panelled cupboard doors opening to two short and two long drawers, flanked by two oval bevelled mirror doors, 196cm wide x 209cm high x 57cm deep.<br/><b>£50-100</b></p> <p>648 A collection of fourteen assorted decorative pictures and prints.<br/><b>£40-80</b></p> <p>649 A 19th century mahogany and gilt metal mounted drop-leaf sofa table, the rounded rectangular top with reeded edge and twin drop-leaves above two frieze drawers backed by two false drawers, raised on trestle ends, with gilt metal paw shaped feet concealing castors, 154cm wide x 75.5cm high x 69cm deep.<br/><b>£150-300</b></p> <p>650 A 19th century rosewood and brass inlaid pedestal card table in the manner of William Trotter, the hinged rounded rectangular top opening to a green baize lined interior, on a rectangular column with beaded detail, resting on a rectangular platform with four downswept supports terminating in brass feet and castors, 91cm wide x 74cm high x 45cm deep.<br/><b>£150-300</b></p> <p>651 A darkwood and brass studded camel stool, with brown leather cushion seat, 55cm wide x 38cm high.<br/><b>£40-80</b></p> |
|--|--|



## Antique, Fine Art & Interiors Sale, 24th Sep, 2025 - 25th Sep, 2025

- |   |   |
|---|---|
| <p>652 A 19th century mahogany breakfront display cabinet/ sideboard, the frieze centred with a figural mask and scroll carved detail over an open recess, flanked by astragal glazed cupboard over an open recess with turned supports, the lower part fitted with a bevelled glass cupboard door flanked by two drawers and two cupboard doors, raised on bun feet with castors, 155cm wide x 199.5cm high x 54cm deep.<br/><b>£100-200</b></p> <p>653 Arthur Brett, a tan coloured suede swivel desk chair, on five mahogany supports with brass capped castors.<br/><b>£40-80</b></p> <p>654 A 20th century leather covered dome top trunk, with incised scroll and foliate detail, 79cm wide x 45cm high.<br/><b>£40-80</b></p> <p>655 A late 19th/ early 20th century mahogany three fold screen, the upper panels set with pictorial panels of ladies and putti, above pale green velvet lined panels below, all with gilt foliate slip detail, 140cm high x 121cm wide.<br/><b>£50-100</b></p> <p>656 A vintage oak extending dining table on turned supports.<br/><b>£20-50</b></p> <p>657 An early 20th century blondewood chest, fitted with two short and three long drawers, all with Art Nouveau styled copper handles, 102.5cm wide x 102cm high x 49cm deep.<br/><b>£40-80</b></p> <p>658 A 19th century dressing table by Cowtan &amp; Sons, the rectangular top over two small drawers and a further long drawer flanked by a pair of panelled cupboard doors, raised on tapered square supports with brass cups and castors, one drawer stamped 'Cowtan &amp; Sons, 309 Oxford St, London, 122cm wide x 77cm high x 59cm deep.<br/><b>£40-80</b></p> <p>659 A pair of brass table lamps and shades, 55cm high; together with two brass bankers lamps, 41cm high and 35cm high.<br/><b>£40-80</b></p> | <p>660 A late 19th/early 20th century French gilt metal mounted mahogany centre table of Louis XVI style, the green and white rectangular marble top above a blind frieze drawer with push-button action, decorated with embossed gilt metal panel of cherubs flanked by ribbon tied foliate swags, raised on four tapered square supports with foliate cast sabots, 108cm wide x 76.5cm high x 56.5cm deep.<br/><b>£2,000-3,000</b></p> <p>661 A pair of George III style mahogany torcheres, the shaped circular tops raised on faceted baluster columns and three downswept supports with scroll feet, 95cm high x 25cm diameter.<br/><b>£600-900</b></p> <p>662 An early 20th century mahogany piano stool with hinged upholstered seat on square tapered supports with spade feet, 55cm wide.<br/><b>£20-50</b></p> <p>663 A pair of ice buckets on black painted metal stands, 68cm high.<br/><b>£40-80</b></p> <p>664 A French mahogany ebony lined and gilt metal mounted three tier etagere, each open shelf inlaid with a lattice design with pierced gilt metal galleries, 35cm wide x 76cm high x 25.5cm deep.<br/><b>£50-100</b></p> <p>665 A Chinese darkwood urn stand, late Qing dynasty, reduced in size, 66.5cm high x 42cm wide.<br/><b>£40-80</b></p> <p>666 A late 19th century walnut and marquetry inlaid three tier whatnot, 90cm high x 53cm wide.<br/><b>£40-80</b></p> <p>667 A vintage brown leather covered travel trunk, 81cm long; together with a vintage suitcase initialed 'F.F.P.H', 61cm wide; and part of an easel, 41cm wide.<br/><b>£20-50</b></p> <p>668 A green upholstered Country House armchair with loose cushion back and seat.<br/><b>£40-80</b></p> <p>669 A pair of faded red upholstered Country House armchairs with loose cushion seats.<br/><b>£50-100</b></p> <p>670 A pair of French walnut upholstered fauteuil armchairs, 102cm high.<br/><b>£70-150</b></p> |
|---|---|



## Antique, Fine Art & Interiors Sale, 24th Sep, 2025 - 25th Sep, 2025

- |   |  |
|---|--|
| <p>671 Howard-Miller Ltd, a chrome, rosewood and smoked glass occasional table/trolley bearing label for 'MDA Product made by Howard-Miller Ltd, Sussex, England', 63cm wide x 63cm high x 42.5cm deep.<br/><b>£40-80</b></p> <p>672 A Continental rosewood and boxwood lined marble top corner chest, the white and grey marble top above two long drawers, raised on tapered square supports, 69cm wide x 84cm high x 38.5cm deep.<br/><b>£40-80</b></p> <p>673 A late 19th century Danish ebonised bobbin turned armchair, the upholstered back below a foliate and shell carved crest over a later upholstered seat, flanked by upholstered arms on tapered bobbin turned supports, 121cm high.<br/><b>£40-80</b></p> <p>674 A Chinese darkwood occasional table, late 19th century, the shaped circular top with a mottled red marble insert, raised on a carved and pierced dragon, bamboo and scroll column, with three downswept claw and ball feet, 56cm diameter x 79.5cm high.<br/><b>£400-600</b></p> <p>675 A 19th century mahogany chiffonier, the upright back with foliate and scroll carved detail above two frieze drawers and two panelled cupboard doors below, enclosed by scroll carved columns, 154cm wide x 144cm high to the top of the upright back, 51cm deep.<br/><b>£70-150</b></p> <p>676 A late 19th/early 20th century Regency style bergere armchair, with double canework back, arms and single canework seat, with later suede upholstered cushion, on tapered cylindrical supports with brass cups and castors.<br/><b>£40-80</b></p> <p>677 An Art Nouveau mahogany washstand, the upright back set with three blue ground ceramic tiles decorated with stylised tulips on a ground of smaller square shaped blue tiles, all over a marble top, open recess and two cupboard doors, 106cm wide x 139.5cm high x 48cm deep.<br/><b>£40-80</b></p> | <p>678 A late 19th century marble top washstand, the upright back set with six blue and white transfer printed tiles over a black and white marble top, over two cupboard doors on tapered cylindrical supports and castors, 106cm wide x 96cm high x 53cm deep.<br/><b>£40-80</b></p> <p>679 A gilt brass cherub formed table lamp and shade, 66cm high.<br/><b>£20-50</b></p> <p>680 A late 19th century oil lamp stand in the form of a Knight's helmet, supported on a spiral column with three maces, 128cm high.<br/><b>£50-100</b></p> <p>681 A vintage teak travel trunk, the cover with stencilled marks for 'TRO. Mangin, 3 Park Ravine, The Park, Nottingham', 88cm wide x 36cm high.<br/><b>£30-70</b></p> <p>682 An early 20th century satinwood and ebony lined music cabinet, the rectangular top above two cupboard doors with oval panel detail, opening to a fitted interior with three pull-out shelves, on a base with four tapered square supports terminating in spade feet, united by an undertier, 56.5cm wide x 93cm high x 34cm deep.<br/><b>£40-80</b></p> <p>683 A pair of Jacobean style oak hall chairs, the upright backs with carved lion, fruit and foliate detail over carpet upholstered seats, raised on tapered cylindrical supports with fluted detail, 115cm high.<br/><b>£40-80</b></p> <p>684 An early 20th century mahogany and marquetry inlaid side cabinet, the hinged rectangular top opening to a deep recessed interior above two shallow drawers, raised on cabriole supports with pad feet, 67cm wide x 71cm high x 40cm deep.<br/><b>£40-80</b></p> <p>685 An early 20th century Belvoir canework conservatory armchair with red and black painted canework details, bearing Belvoir plaque to the reverse, 80cm high.<br/><b>£30-70</b></p> <p>686 A late 19th century rosewood and marquetry inlaid side cabinet, with panel and glazed cupboard door opening to fitted interior with three shelves, 54cm wide x 94cm high.<br/><b>£40-80</b></p> |
|---|--|



## Antique, Fine Art & Interiors Sale, 24th Sep, 2025 - 25th Sep, 2025

- |  |  |
|--|--|
| <p>687 An unusual late 19th/early 20th century Chinese darkwood vase shaped display stand, of asymmetrical form with five open shelves, 93.5cm high x 63cm wide x 20cm deep.<br/><b>£70-150</b></p> <p>688 A 19th century rosewood mirror back chiffonier, fitted with three mirrored cupboard doors, each opening to a fitted interior with a single shelf, 150cm wide x 156cm high x 44cm deep.<br/><b>£100-200</b></p> <p>689 A 19th century mahogany cheval mirror, the rectangular mirror plate set between tapered square supports with urn shaped finials, raised on four downswept supports with brass feet and castors, 142.5cm high x 64.5cm wide.<br/><b>£70-150</b></p> <p>690 A George III style mahogany carver armchair, with blue velvet upholstered seat, 98cm high.<br/><b>£30-70</b></p> <p>691 A 19th century ebonised brass and red tortoiseshell boule Credenza, fitted with a central panelled cupboard door opening to a velvet lined fitted interior with single shelf, flanked by glazed cupboard doors, each opening a velvet lined interior with a single fitted shelf, raised on a plinth base with ornate gilt metal mounts, 171.5cm wide x 114.5cm high x 43cm deep.<br/><b>£1,500-2,000</b></p> <p>692 A mounted Mouflon horn trophy; together with another skull and horn trophy.<br/><b>£40-80</b></p> <p>693 Four composite gilt two light wall sconces with acorn detail, 40cm long.<br/><b>£30-70</b></p> <p>694 A 19th century rosewood armchair, the button down velvet upholstered back, arms and stuff-over serpentine seat, raised on scroll supports, 87cm high.<br/><b>£70-150</b></p> <p>695 An early 20th century George III style mahogany centre table, the circular top raised on four chamfered supports with pierced spandrel detail, united by an X-shaped stretcher, 75cm diameter x 74.5cm high.<br/><b>£40-80</b></p> | <p>696 A late 19th/early 20th century French mahogany bureau plat in the Louis XVI style, the rectangular top with brown tooled leather writing surface above a single frieze drawer, centred with applied gilt metal mount, raised on four tapered fluted supports with gilt metal feet, 120.5cm wide x 74cm high x 71cm deep.<br/><b>£800-1,200</b></p> <p>697 A Neoclassical style green and white painted window seat, the upright ends with lyre carved and pierced panels above a white calico upholstered seat, raised on four sabre leg supports, 95.5cm wide x 74cm high x 35cm deep.<br/><b>£70-150</b></p> <p>698 A pair of contemporary blonde oak open bookcases, each with six open shelves, 89.5cm wide x 180cm high x 30cm deep.<br/><b>£50-100</b></p> <p>699 Heal &amp; Son, a mahogany and satinwood banded writing table, the later loose rectangular top above two frieze drawers, raised on tapered square supports with brass cups and castors, one drawer stamped 'Heal &amp; Son London', 123cm wide x 74.5cm high x 62cm deep.<br/><b>£40-80</b></p> <p>700 A Chinese darkwood urn stand, late 19th century, the shaped circular top with a mottled red marble insert above a frieze carved and pierced with fruit and foliage, raised on four square sectioned supports with claw and ball feet, 41cm diameter x 47cm high.<br/><b>£70-150</b></p> <p>701 A vintage Crosley turntable/compact disc player.<br/><b>£20-50</b></p> <p>702 An early 20th century later painted pine chest, set with two small drawers over two long graduated drawers, with cup handles and tree painted details, 96cm wide x 78.5cm high x 48cm deep.<br/><b>£40-80</b></p> <p>703 An 18th/19th century mahogany bachelors chest, the rectangular top with moulded edge above two short and three long graduated drawers, raised on bracket feet, 77cm wide x 76cm high x 43.5cm deep.<br/><b>£70-150</b></p> <p>704 A pair of lacquered brass standard lamps and shades, 145cm high.<br/><b>£40-80</b></p> |
|--|--|



## Antique, Fine Art & Interiors Sale, 24th Sep, 2025 - 25th Sep, 2025

- |  |  |
|--|--|
| <p>705 A group of five assorted decorative pictures and prints, to include coloured print of a soldier, two horses and cockerels after L. Kemp-Welch.<br/><b>£20-50</b></p> <p>706 A pair of 19th century ebonised and brass inlaid boulle pier cabinets, the rectangular tops above a plain frieze and single cupboard door, opening to a velvet lined interior with single shelf, raised on shaped plinth with applied gilt metal mounts, 87cm wide x 113.5cm high x 36.5cm deep.<br/><b>£800-1,200</b></p> <p>707 A George III style reproduction mahogany occasional/end table, the rectangular top with shaped three-quarter gallery above a single frieze drawer, raised on four shell and foliate carved cabriole supports, 68cm wide x 55cm high x 44cm deep.<br/><b>£40-80</b></p> <p>708 A pair of 20th century George III style mahogany carver armchairs, the scroll carved top rails above an interlaced and scrolling splat, flanked by open arms with scroll ends, above stuff-over upholstered seats raised on scroll carved cabriole supports with claw and ball feet, 104cm high.<br/><b>£150-300</b></p> <p>709 A Chinese darkwood square shaped coffee table, centred with a pierced foliate roundel within a pierced geometric border, with glass top, raised on square section supports with slightly incurved foot detail, 100cm square x 50cm high.<br/><b>£70-150</b></p> <p>710 A Chinese darkwood square shaped Kang table, late 19th/early 20th century, with carved and pierced interlocking frieze, raised on square supports with inward scrolling detail, 94.5cm square x 46cm high.<br/><b>£100-200</b></p> <p>711 Guy Rogers, a pair of mid century teak reclining armchairs.<br/><b>£150-300</b></p> <p>712 Guy Rogers, a mid 20th century teak sofa bed, 202cm long.<br/><b>£150-300</b></p> | <p>713 A 19th century walnut and gilt metal mounted Bonheur du Jour, the upright back with mirror plate over two small drawers flanked by glazed cupboard doors, each opening to a single shelved interior, on a base with green and gilt leather writing surface over a single frieze drawer, raised on cabriole supports with foliate cast mounts, 112cm wide x 130cm high x 58cm deep.<br/><b>£250-500</b></p> <p>714 A collection of assorted decorative prints and pictures to include assorted black and white engravings of Monarchs from Montagues, History of England etc.<br/><b>£40-80</b></p> <p>715 A Chinese porcelain blue and white barrel shaped stool, 45cm high x 30.5cm diameter.<br/><b>£40-80</b></p> <p>716 A reproduction mahogany and brass bound military type pedestal desk with red leather writing surface over a central frieze drawer, flanked by four small drawers on each side, 124cm wide x 76cm high x 62cm deep.<br/><b>£50-100</b></p> <p>717 A composite table lamp and shade, 97.5cm high; together with a small pair of composite table lamps and shades, 43cm high.<br/><b>£40-80</b></p> <p>718 Four composite stag form table lamps and shades, 66cm high.<br/><b>£50-100</b></p> <p>719 A large Chinese darkwood alter table, the rectangular panelled top above a frieze carved and pierced with scroll motifs and centred on each side with a circular dreamstone roundel, raised on four tapered rectangular sectioned supports, 209cm long x 105.5cm high x 44cm deep.<br/><b>£2,000-3,000</b></p> <p>720 An early 20th century red lacquer Chinoiserie decorated three tier cake stand, 89cm high; a woven wicker circular basket, 42cm diameter x 26cm high; and a small pine bedside chest fitted with two drawers, each with recessed brass handles, 53cm wide x 42.5cm high x 40cm deep.<br/><b>£30-70</b></p> <p>721 A box of assorted decorative pictures and prints to include a coloured map of Northumberland, coloured print of Forgandenny church, etc.<br/><b>£40-80</b></p> |
|--|--|



## Antique, Fine Art & Interiors Sale, 24th Sep, 2025 - 25th Sep, 2025

- 722 A Chinese lacquer side cabinet, 20th century, the rectangular top carved with peony, rock work, bamboo and birds above three frieze drawers and a pair of cupboard doors below, 110cm wide x 46.5cm high x 38.5cm deep.  
**£100-200**
- 723 A pair of gilt metal mounted stained beech marble top occasional tables, the circular tops above a frieze with laurel wreath detail, raised on three cylindrical supports with fluted detail, united by concave stretcher surmounted with an urn.  
**£40-80**
- 724 A George III mahogany and marquetry inlaid demi lune card table, the hinged top opening to a green baize lined interior above a frieze inlaid with foliate swags, raised on four tapered square supports, 92cm wide x 72.5cm high x 45cm deep.  
**£120-180**
- 725 A reproduction walnut miniature chest on chest, fitted with two short over three long drawers in the upper part, the lower section with two short and one long drawer, raised on bracket feet, 38cm wide x 76.5cm high x 28cm deep.  
**£40-80**
- 726 Perth Interest, A late 19th/early 20th century carved and painted wood architectural element, carved with the coat of arms of Perth, carved in relief with double headed eagle and shield above banner, inscribed 'Pro Rege Lege et Grege', 143cm high x 115cm wide.  
Provenance: ex-Perth Fire Brigade Station, King Edward Street, where the crest was set into the lower frieze of the building.  
**£800-1,200**
- 726A An antique stone rectangular shaped garden planter, 91cm long x 21cm high x 35cm deep.  
**£70-150**
- 726B A pair of stone circular shaped garden planters, 46cm diameter, 24cm high.  
**£70-150**
- 727 A 19th century rosewood and brass inlaid snap-top centre/supper table, the circular top with brass line inlaid border on a turned column with foliate carved collar, resting on a concave platform base with paw feet and recessed castors, 135cm diameter x 75.5cm high.  
**£300-500**
- 728 A 19th century mahogany partners desk, the rounded rectangular top with green and gilt leather writing surface set to one side, with a central frieze drawer flanked by four smaller drawers, the other side set with three frieze drawers over a pair of cupboard doors, 168cm wide x 78.5cm high x 113cm deep.  
**£150-300**
- 729 An Edwardian mahogany and boxwood lined window seat, with upholstered arms and concave seat, on tapered square supports, 99cm wide x 62cm high x 39cm deep; together with an early 20th century mahogany and boxwood lined jardiniere stand, 29cm diameter x 99cm high.  
**£40-80**
- 730 A pine single bed, 186cm long x 102cm high x 114cm deep.  
**£50-100**
- 731 An antique Italian walnut, ebony and marquetry inlaid hall chair, the upright panelled back with two urn shaped finials above a solid seat, raised on turned supports united by stretchers, 110cm high.  
**£70-150**
- 732 A 19th century rosewood work table, the rectangular top above a single frieze drawer with fitted interior and pull-out well, raised on a tapered octagonal column with concave platform base and bun feet, 49cm wide x 72.5cm high x 38cm deep.  
**£50-100**
- 733 An early 20th century mahogany jardiniere stand, the circular top with gadrooned carved edge, raised on four tapered square supports, united by a concave undertier, 35cm diameter x 89cm high.  
**£30-70**
- 734 An antique style reproduction oak refectory table, the rectangular planked top raised on four tapered cylindrical supports, united by an H-shaped stretcher, 183cm long x 73.5cm high x 84cm wide.  
**£150-300**
- 735 A pair of blue ground porcelain table lamps, 33cm high; together with a porcelain jar and cover form table lamp and shade, 52cm high; and a blue ground hexagonal shaped ceramic table lamp and shade.  
**£40-80**





## Antique, Fine Art & Interiors Sale, 24th Sep, 2025 - 25th Sep, 2025

- |   |  |
|---|--|
| <p>736 A late 19th century rosewood and marquetry inlaid centre/occasional table, the circular top with inlaid scroll border, raised on five tapered cylindrical supports with spiral fluted detail, united by stretchers, 84cm diameter x 76cm high.<br/><b>£50-100</b></p> <p>737 A vintage stained beech two light table lamp, set with opaque white and amber tinted frilled glass shades, both with pull chain on/off switch, 63cm high.<br/><b>£40-80</b></p> <p>738 A stained wood pedestal, the circular top on cylindrical column with fluted detail, on stepped circular plinth, 29cm diameter x 77.5cm high.<br/><b>£30-70</b></p> <p>739 A Gothic style brass standard lamp and shade, the central column with crown shaped surmount surrounded by six smaller cylindrical uprights, each with fleur-de-lys motif, raised on six downswept supports with paw feet; together with a brass jewelled crown/surmount section, approximately 188cm high.<br/><b>£400-600</b></p> <p>740 A late 19th/early 20th century giltwood three fold screen, with clear glass panels in the upper sections and upholstered panels below, with shell and scroll carved details, 185cm high x 158cm wide.<br/><b>£100-200</b></p> <p>741 A George III style mahogany demi lune card table, the shaped demilune top opening to a grey baize lined interior, above one false drawer and one pull-out drawer, raised on tapered cylindrical supports with pad feet, 76cm wide x 72cm high x 38cm deep.<br/><b>£50-100</b></p> <p>742 An Edwardian mahogany and boxwood lined bijouterie table, the hinged circular top with clear glass panel opening to a cloth lined interior, raised on four tapered square supports, united by scroll stretchers, 48.5cm diameter x 74cm high.<br/><b>£50-100</b></p> <p>743 Three assorted early 20th century side chairs.<br/><b>£30-70</b></p> <p>744 A late 19th/early 20th century giltwood overmantle mirror, of rectangular form, the frame with foliate moulded details, with shaped spandrels, each centred with a floral boss, raised on black coloured bun feet, 65cm high x 94cm wide.<br/><b>£50-100</b></p> | <p>745 A late 19th century pitch pine pew, the sides with fleur-de-lys motifs above numbers 73 to one side and 82 to the other, 145cm wide x 128cm high.<br/><b>£50-100</b></p> <p>746 A late 19th century giltwood side chair, the upholstered back and seat raised on four tapered cylindrical supports with fluted detail, resting on white ceramic castors, the top rail with quiver of arrows and flaming torch surmount, 79cm high.<br/><b>£100-200</b></p> <p>747 A Chinese darkwood urn stand, late 19th century, the circular top with mottled red and white marble insert above a frieze carved with blossom flowers and foliage, raised on four cabriole supports, united by an X-shaped stretcher, 27cm diameter x 90cm high.<br/><b>£100-200</b></p> <p>748 A 19th century burr walnut, boxwood lined and gilt metal mounted whatnot, the rectangular top with pierced three-quarter gallery over three divisions and a single frieze drawer, raised on bun feet, 62cm wide x 74cm high x 40cm deep.<br/><b>£70-150</b></p> <p>749 A set of six late 19th century French mahogany faux bamboo side chairs, attributed to Maison des Bambous, Paris, each with woven cane work seats, 121cm high.<br/><b>£800-1,200</b></p> <p>750 A black painted metal single bed, with brass bowl finial detail, 200cm long x 129cm high x 107cm wide.<br/><b>£50-100</b></p> <p>751 Georg Jensen for Kubus, a mid 20th century teak rocking chair, bearing Kubus label to underside of seat, 81cm high.<br/><b>£100-200</b></p> <p>752 An antique pine kist, the hinged rectangular top opening to a fitted interior with covered compartment, the sides with black coloured drop metal handles, 89cm wide.<br/><b>£40-80</b></p> <p>753 An antique pine kist, the hinged cover opening to a fitted interior with covered compartment and two small drawers, the sides with metal carry handles; together with a machine made green ground Persian style wall hanging/rug, 104cm wide.<br/><b>£40-80</b></p> |
|---|--|



## Antique, Fine Art & Interiors Sale, 24th Sep, 2025 - 25th Sep, 2025

- |  |   |
|--|---|
| <p>754 A Chinese darkwood wall mounted display cabinet, with single glazed door opening to a fitted interior with arrangement of small shelves, 70cm high x 45cm wide.<br/><b>£50-100</b></p> <p>755 A reproduction mahogany Canterbury, set with four concave divisions over two shallow drawers, raised on turned supports, 47cm wide x 54cm high x 38cm deep.<br/><b>£40-80</b></p> <p>756 An early 20th century George III style bowfront serving table, fitted with central frieze drawer flanked by two small drawers on either side, raised on square supports with spade feet, 130cm wide x 81cm high x 57cm deep; together with an oak barley twist drop-leaf dining table, 91cm wide; and a similar smaller table, 60cm wide.<br/><b>£30-70</b></p> <p>757 A Chinese darkwood Kang table, late 19th/early 20th century, the rectangular panelled top above a frieze carved and pierced with scrolls, raised on four square sectioned supports with inverted scroll detail, 76cm wide x 27cm high x 41cm deep.<br/><b>£100-200</b></p> <p>758 A Chinese darkwood urn stand, late 19th century, the circular top with mottled red marble insert above a frieze, carved and pierced with blossom flowers, raised on four square sectioned supports terminating in claw and ball feet, united by a circular under tier, 45cm diameter x 56.5cm high.<br/><b>£100-200</b></p> <p>759 A late 19th century Japanese lacquer two fold screen, each panel decorated in shallow relief with a figure in a fenced garden, 183.5cm high x 120cm wide.<br/><b>£600-900</b></p> <p>760 A 19th century mahogany and ebony lined drum shaped occasional table, the circular top centred with a hinged circular shaped cover with recessed brass handle, over a frieze with four pull-out drawers divided by four false drawers, raised on a tapered cylindrical column with reeded detail and four downswept supports, terminating in brass cups and castors, 60cm diameter x 73.5cm high.<br/><b>£100-200</b></p> | <p>761 A 19th century rosewood slipper chair, the blue/green buttoned down upholstered back and stuff-over seat raised on tapered cylindrical supports with brass cups and castors, 81cm high.<br/><b>£50-100</b></p> <p>762 A giltwood picture frame with shell and scroll carved detail, overall 97cm high x 119cm wide, inner aperture 67.5cm x 90cm; together with another larger picture frame, overall 138cm high x 153cm wide, inner aperture 98.5cm x 114cm.<br/><b>£40-80</b></p> <p>763 A Victorian mahogany parlor armchair, the blue button down velvet upholstered back, arms, and stuff-over serpentine seat on a flower and scroll carved frame raised on castors, 110cm high.<br/><b>£70-150</b></p> <p>764 A late 19th century mahogany armchair with later button down upholstered back, arms and stuff-over seat, raised on tapered cylindrical supports resting on castors, 85cm high.<br/><b>£50-100</b></p> <p>765 An oak Jacobean style hall chair, the later upholstered back and seat raised on turned and block supports, the top rail centred with a grotesque mask, 112.5cm high.<br/><b>£30-70</b></p> <p>766 A 19th century rosewood Prie Dieu chair, with blue ground needlework upholstered back and seat, raised on foliate carved supports with brass cups and castors, 109cm high.<br/><b>£50-100</b></p> <p>767 A 20th century lacquered brass and clear glass coffee table, 111cm wide x 45cm high x 56cm deep.<br/><b>£40-80</b></p> <p>768 A silvered metal conical shaped four tier hanging light/ chandelier, decorated with clear glass beads and set with four rows of hanging glass tealight holders, approximately 125cm high excluding hanging chain x 66cm diameter.<br/><b>£50-100</b></p> <p>769 A 19th century mahogany and ebony lined octagonal shaped wine cooler, the hinged cover opening to a plain interior, the led element no longer present, the sides with brass drop-carry handles on an integral base with four tapered square supports, brass cups and castors, 50cm wide x 72cm high.<br/><b>£50-100</b></p> |
|--|---|



## Antique, Fine Art & Interiors Sale, 24th Sep, 2025 - 25th Sep, 2025

- |  |   |
|--|---|
| <p>770 A vintage brown leather hat carrying case, initialed 'K.V.', 45cm wide x 42cm high; together with two other assorted vintage brown leather suitcases and two other black and white metal mounted cases.<br/><b>£40-80</b></p> <p>771 A George III mahogany console/ serving table, the rectangular top with moulded edge, raised on four foliate scroll carved cabriole supports with claw and ball feet, 158cm wide x 75cm high x 66cm deep.<br/><b>£100-200</b></p> <p>772 A late 19th/ early 20th century mahogany and boxwood lined dressing table mirror, the oval bevelled mirror plate on a serpentine base fitted with three small drawers raised on gilt metal claw and ball feet, 62cm wide x 64cm high.<br/><b>£40-80</b></p> <p>773 A Chinese darkwood urn stand, late 19th century, the octagonal shaped top with red marble insert, above a frieze carved and pierced with fruit, flowers and foliage, raised on four cabriole supports with claw feet, united by an X-shaped stretcher, 30cm diameter x 90cm high.<br/><b>£150-300</b></p> <p>774 A mid-century Danish rosewood dressing chest, probably Arne Wahl Iversen for Vinde, the upper section fitted with a lift-up panel concealing a mirror to the underside, flanked by two small drawers on each side, over a pull-out slide and three long drawers raised on tapered cylindrical supports united by stretchers, 85cm wide x 109.5cm high x 44cm deep.<br/><b>£100-200</b></p> <p>775 A Chinese darkwood rectangular shaped stool, with lift-off upholstered rectangular seat on four slightly tapered square supports, 87cm wide x 54cm high.<br/><b>£40-80</b></p> <p>776 A nest of three Chinese darkwood occasional tables, of plain rectangular form, each with a frieze carved and pierced with blossom flowers, raised on cylindrical supports united by stretchers, the largest 45cm wide x 63cm high x 31cm deep.<br/><b>£70-150</b></p> <p>777 Two Bergere style single beds, lacking rails; together with four other assorted headboards.<br/><b>£40-80</b></p> | <p>778 An antique barrel back wing arm chair, upholstered in ochre coloured fabric with loose cushion seat raised on shell carved cabriole supports with pad feet, 112cm high.<br/><b>£100-200</b></p> <p>779 A Chinese darkwood circular occasional table, late 19th century, the top set with a blue and white porcelain panel, decorated with peony, scrolling foliage, and four phoenix, above a frieze carved and pierced with fruit and flowers atop a column carved with two figures and pine trees raised on three down-swept supports with claw and ball feet, 57cm diameter x 82cm high.<br/><b>£300-500</b></p> <p>780 A 19th century ebonised brass and red tortoiseshell bouille centre table, of shaped oval form, the top with black leather insert above a single frieze drawer, centred with female mask mount, raised on four cabriole supports with applied gilt metal mounts, 101cm wide x 75.5cm high x 6cm deep.<br/><b>£200-300</b></p> <p>781 A reproduction George III style mahogany side table, the rectangular top with three-quarter gallery, above two frieze drawers raised on trestle ends with downswept supports united by a stretcher, 102cm wide x 75cm high x 56cm deep.<br/><b>£50-100</b></p> <p>782 A 19th century mahogany snap top circular occasional table, 66cm diameter x 69.5cm high, together with an early 20th century mahogany hexagonal shaped occasional table, 46cm wide x 59.5cm high, and an early 20th century mahogany rectangular occasional table, 61cm wide x 64cm high, (3).<br/><b>£50-100</b></p> <p>783 A Chinese darkwood and brass mounted side cabinet, 20th century, fitted with a panelled cupboard door opening to a fitted interior with later shelf, over a single frieze drawer with handles formed as bats over a further cupboard door, raised on square section supports with inverted scroll detail, 71cm wide x 130cm high x 53cm deep.<br/><b>£150-300</b></p> <p>784 A late 19th century oak revolving bookcase, set with presentation plaque inscribed to 'Mrs. Mangin', dated July 31st 1899, 51cm square x 105cm high.<br/><b>£50-100</b></p> |
|--|---|



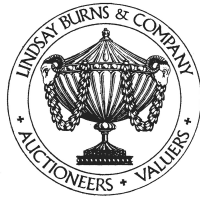
## Antique, Fine Art & Interiors Sale, 24th Sep, 2025 - 25th Sep, 2025

- |   |  |
|---|--|
| <p>785 A giltwood standard lamp and shade, 171cm high.<br/><b>£50-100</b></p> <p>786 A Chinese darkwood alter table, 19th century, the rectangular top with a mottled black and white marble insert, above a frieze carved in shallow relief with fruit and foliage, and a further pierced apron carved with birds and blossom flowers, raised on four square section supports with claw and ball feet, 97.5cm wide x 94cm high x 48.4cm deep.<br/><b>£800-1,200</b></p> <p>787 A nest of four Chinese darkwood occasional tables, each of plain rectangular form above a pierced frieze centred with circular roundels, raised on cylindrical supports united by stretchers, the largest 50.5cm wide x 71.5cm high x 37cm deep.<br/><b>£300-500</b></p> <p>788 A late 19th/early 20th century Japanese darkwood writing desk, the upright back fitted with open shelves, two small cupboards and three small drawers, on a base fitted with four small drawers, raised on bamboo carved cabriole supports, the upper section with carved and pierced decoration of eagle and dragon, 107cm wide x 141cm high x 68cm deep.<br/><b>£400-600</b></p> <p>789 An antique Chinese lacquer eight fold screen, with incised and painted decoration of figures and warriors in a landscape to one side, the other side decorated with birds, rock work, flowers and foliage, 175cm high x 280cm wide.<br/><b>£800-1,200</b></p> <p>790 A pair of gilt framed rectangular bevelled wall mirrors, 104cm x 74cm; together with another rectangular wall mirror, 84.5cm x 64cm.<br/><b>£40-80</b></p> <p>791 An 18th/19th century mahogany longcase clock, Saml. Whichcote, London, the brass dial with silver chapter ring bearing Arabic and Roman numerals, with subsidiary strike silent dial in the arch, subsidiary seconds dial and date aperture, the twin train four pillar movement striking on a bell within a dome top hood, supported by fluted columns with gilt metal collars, the trunk door with reeded edge above a rectangular base, raised on bracket feet, pendulum and weights present, 228cm high.<br/><b>£200-300</b></p> | <p>792 A Chinese lacquer and hardstone inlaid six fold screen, decorated to one side with pavilions, figures and Kylin, the other side with gilded scattered foliate decoration, 141cm high x 159cm wide.<br/><b>£400-600</b></p> <p>793 A group of seven assorted decorative pictures and prints.<br/><b>£30-70</b></p> <p>794 A Chinese darkwood display cabinet, late 19th century, the open upper half set with an arrangement of seven shelves, all with pierced foliate galleries above a base fitted with two foliate carved panel doors, opening to a fitted interior with open shelf and two small drawers above a pierced apron, raised on square section feet, 111cm wide x 208cm high x 38cm deep.<br/><b>£2,000-3,000</b></p> <p>795 A 19th century Amboyna ebonised gilt metal and porcelain mounted Bonheur De Jour, the upright back with central mirror back section, flanked by a pair of cupboard doors, on a base fitted with central blind frieze drawer with leather lined writing slide, flanked by two further drawers, over a mirror backed base and two open shelves, the porcelain mounts painted with 18th century figures in richly gilded borders on a blue ground, 134.5cm wide x 149cm high x 55cm deep.<br/><b>£1,000-1,500</b></p> <p>796 A 19th century mahogany three tier graduated dumb waiter, each tier with a moulded edge, the lower tier revolving, raised on three downswept supports with recess castors, the upper tier 40cm diameter x 109cm high.<br/><b>£100-200</b></p> <p>797 A decorative Chinese octagonal shaped wall mirror, the frame decorated with kingfisher, duck and flowers, with brass mounted details, 70cm diameter.<br/><b>£40-80</b></p> <p>798 A Maimana Kilim runner, the black and green ground decorated with coloured lozenge shaped motifs, in shades of ochre, purple and puce, 290cm x 85cm.<br/><b>£70-150</b></p> |
|---|--|



## Antique, Fine Art & Interiors Sale, 24th Sep, 2025 - 25th Sep, 2025

- 799 A small Super Kazak rug, the rectangular blue ground decorated with a row of five lozenge shaped motifs within multiple borders, 123cm x 78cm; together with a smaller Persian rug, the rectangular madder ground decorated with three stylised foliate medallions within a blue and ivory ground border, (2).  
**£50-100**
- 800 A Baluchi rug, the madder ground decorated with two lozenge shaped medallions enclosing stylised flowers, within a black ground border, 144cm x 86cm.  
**£70-150**
- 801 A Chobi Kilim runner, the ivory coloured ground decorated with lozenge shaped motifs, worked in orange, purple, blue and green coloured threads, on an ochre coloured ground, 251cm x 82cm.  
**£70-150**
- 802 A Maimana Kilim runner, the black ground decorated with lozenge shaped motifs, worked in green, blue, purple and ivory coloured threads, within a madder coloured border, 300cm x 82cm.  
**£70-150**
- 803 A Maimana Kilim rug, the purple ground decorated with rows of lozenge shaped motifs, within an ochre coloured border, 183cm x 124cm.  
**£70-150**
- 804 A Persian Heriz carpet, 20th century, the rectangular madder ground centred with a large stylised foliate medallion within ivory coloured spandrels enclosing serrated leaves, within a blue ground border of repeating foliate motifs, 253cm x 170cm.  
**£300-500**
- 805 A Persian rug, the rectangular charcoal coloured ground decorated with rows of lozenge shaped medallions, worked in white, orange and madder coloured threads, within multiple borders of stylised animals, flowers and foliage, 316cm x 202cm.  
**£70-150**
- 806 A Persian Kashan carpet, 20th century, the rectangular red ground centred with a blue ground floral medallion and all-over design of flowers and scrolling foliage, within a blue ground border of repeating foliate motifs, 405cm x 305cm.  
**£400-600**
- 807 A Persian Tabriz carpet, the rectangular madder ground centred with a blue ground floral medallion within green ground spandrels and a blue ground border of repeating foliate motifs, 418cm x 300cm.  
**£400-600**
- 808 An antique style Saharna Collection carpet, 389cm x 300cm.  
**£100-200**
- 809 A large Antique Persian carpet, late 19th/ early 20th century, the rectangular blue ground decorated with rows of stylised flowers and serrated leaves, within a wide madder ground border of repeating stylised flowerheads and scrolling tendrils, some wear, patche repairs and exposed weft showing in places, 607cm x 408cm.  
**£300-500**
- 810 A Persian part pile runner, the rectangular madder ground decorated with three rows of rectangular shaped panels, within multiple borders, 261cm x 83cm.  
**£70-150**
- 811 A Persian Bakhtiari carpet, the madder ground centred with a large ivory ground flowerhead, within a madder ground border of stylised flowers and hooked boteh, 298cm x 207cm.  
**£250-500**
- 812 A Persian long rug, late 19th/ early 20th century, the rectangular madder ground decorated with four large stylised flowerheads, worked in blue, green, orange and black coloured threads, within a charcoal coloured border of stylised flowerheads, 286cm x 122cm.  
**£100-200**
- 813 A Persian Qashqai carpet, 240cm x 179cm.  
**£100-200**
- 814 A Persian Hamedan rug, the madder ground decorated with a row of lozenge shaped medallions, within a blue ground border of serrated leaves and stylised flowerheads, 220cm x 150cm.  
**£150-300**
- 815 A Persian Quchan rug, the rectangular blue ground centred with a pale pink and ivory coloured lozenge shaped medallion, within a madder ground border of stylised animals worked in multi-coloured threads, 203cm x 123cm.  
**£100-200**



## Antique, Fine Art & Interiors Sale, 24th Sep, 2025 - 25th Sep, 2025

- 816 A Persian Shiraz type carpet, the rectangular field centred with a large floral medallion within multi-coloured guard stripes, and a border of stylised flowerheads, 267cm x 167cm.  
**£150-300**
- 817 A Persian part pile carpet, the pale pink rectangular ground decorated with four rows of square floral panelled details, within a border of stylised flowerheads, the edges with multi-coloured tufted details, 197cm x 125cm.  
**£100-200**
- 818 A Persian Lori long rug, the rectangular charcoal ground decorated with two rows of lozenge shaped medallions, worked in orange and madder coloured threads, within a border of serrated leaves, 272cm x 115cm.  
**£100-200**
- 819 A Persian Kashan carpet, the rectangular madder ground centred with a dark blue ground floral medallion, surrounded by flowerheads and scrolling foliage, within a blue ground border of repeating foliate motifs, 310cm x 210cm.  
**£300-500**
- 820 A Persian rug, the rectangular ivory ground decorated with rows of urns issuing flowers and foliage, within a blue ground border of stylised flowerheads and serrated leaves, 209cm x 148cm.  
**£70-150**
- 821 A Persian rug, the rectangular field centred with multiple lozenge shaped medallions, within a blue ground border of stylised flowers and foliage, 222cm x 140cm.  
**£70-150**
- 822 A Persian Kashan carpet, the rectangular pale blue ground with all-over design of flowers and scrolling foliage, within an ivory ground border of repeating foliate motifs, 359cm x 250cm.  
**£700-900**